

Anti-ACY3 antibody

Cat. No.	D221490
Package	25 µl/100 µl/200 µl
Storage	-20°C, pH7.4 PBS, 0.05% NaN ₃ , 40% Glycerol

Product overview

Description	Anti-ACY3 rabbit polyclonal antibody
Applications	ELISA, WB, IHC
Immunogen	Fusion protein of human ACY3
Reactivity	Human, Mouse
Content	0.3 mg/ml
Host species	Rabbit
Ig class	Immunogen-specific rabbit IgG
Purification	Antigen affinity purification

Target information

Symbol	ACY3
Full name	Aspartoacylase (aminocyclase) 3
Synonyms	ACY-3; HCBP1
Swissprot	Q96HD9

Target Background

Acy3, which encodes a deduced 318-amino acid protein with a calculated molecular mass of about 35.2 kD. Acy3 has no membrane domain, but it contains consensus sites for N-glycosylation, tyrosine sulfation, tyrosine and threonine phosphorylation, and myristoylation. Northern blot analysis detected high expression of an approximately 1.4-kb Acy3 transcript in kidney, followed by liver. Weaker expression was detected in heart, small intestine, brain, lung, testis, and stomach. Testis expressed an additional transcript of about 2.2 kb.

订购热线: 4008-898-798

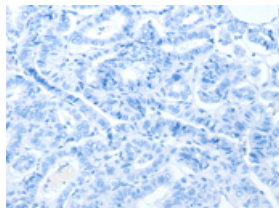
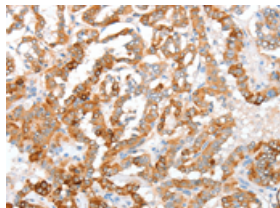
Applications

Immunohistochemistry

Predicted cell location: Cytoplasm

Positive control: Human thyroid cancer

Recommended dilution: 50-200

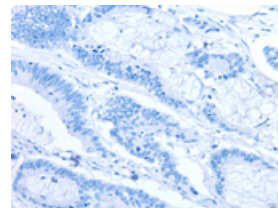
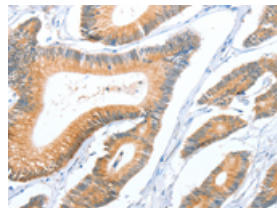


The image on the left is immunohistochemistry of paraffin-embedded Human thyroid cancer tissue using ml221490(ACY3 Antibody) at dilution 1/35, on the right is treated with fusion protein. (Original magnification: $\times 200$)

Predicted cell location: Cytoplasm

Positive control: Human colon cancer

Recommended dilution: 50-200



The image on the left is immunohistochemistry of paraffin-embedded Human colon cancer tissue using ml221490(ACY3 Antibody) at dilution 1/35, on the right is treated with fusion protein. (Original magnification: $\times 200$)

Western blotting

Predicted band size: 35 kDa

Positive control: Mouse kidney and rat kidney tissue

Recommended dilution: 500-2000

Gel: 10% SDS-PAGE

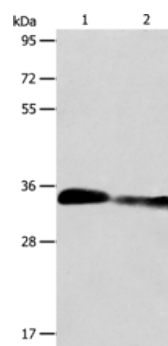
Lysate: 40 μ g

Lane 1-2: Mouse kidney tissue, rat kidney tissue

Primary antibody: ml221490(ACY3 Antibody) at dilution 1/750

Secondary antibody: Goat anti rabbit IgG at 1/8000 dilution

Exposure time: 10 seconds



ELISA

Recommended dilution: 2000-5000

联系电话: 4008-898-798, 021-61725725

联系QQ: 2881505695, 2881505696

邮箱: mlbio_cn@yeah.net

网址: www.mlbio.cn