

Anti-MEP1A antibody

Cat. No.	ml222673
Package	25 µl/100 µl/200 µl
Storage	-20°C, pH7.4 PBS, 0.05% NaN ₃ , 40% Glycerol

Product overview

Description	Anti-MEP1A rabbit polyclonal antibody
Applications	ELISA, WB
Immunogen	Fusion protein of human MEP1A
Reactivity	Human, Rat
Content	0.1 mg/ml
Host species	Rabbit
Ig class	Immunogen-specific rabbit IgG
Purification	Antigen affinity purification

Target information

Symbol	MEP1A
Full name	meprin A, alpha (PABA peptide hydrolase)
Synonyms	PPHA
Swissprot	Q16819

Target Background

Meprin A subunit alpha also known as endopeptidase-2 or PABA peptide hydrolase is the alpha subunit of the meprin A enzyme that in humans is encoded by the MEP1A gene.[1][2]The MEP1A locus is on chromosome 6p in humans and on chromosome 17 in mice. The meprin alpha subunit product of the MEP1A gene is processed in the endoplasmic reticulum during intracellular transport, and is secreted as homomeric meprin A.

订购热线: 4008-898-798

Applications

Western blotting

Predicted band size: 84 kDa

Positive control: Human rectum carcinoma tissue

Recommended dilution: 200-1000

Gel: 6%SDS-PAGE

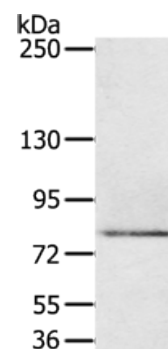
Lysate: 40 µg

Lane: Human rectum carcinoma tissue

Primary antibody: ml222673(MEP1A Antibody) at dilution 1/200

Secondary antibody: Goat anti rabbit IgG at 1/8000 dilution

Exposure time: 3 minutes



ELISA

Recommended dilution: 1000-2000

联系电话: 4008-898-798, 021-61725725

联系QQ: 2881505695, 2881505696

邮箱: mlbio_cn@yeah.net

网址: www.mlbio.cn