

Anti-PABPC1 antibody

Cat. No.	ml222676
Package	25 µl/100 µl/200 µl
Storage	-20°C, pH7.4 PBS, 0.05% NaN ₃ , 40% Glycerol

Product overview

Description	Anti-PABPC1 rabbit polyclonal antibody
Applications	ELISA, WB
Immunogen	Fusion protein of human PABPC1
Reactivity	Human, Mouse, Rat
Content	0.8 mg/ml
Host species	Rabbit
Ig class	Immunogen-specific rabbit IgG
Purification	Antigen affinity purification

Target information

Symbol	PABPC1
Full name	poly(A) binding protein, cytoplasmic 1
Synonyms	PAB1; PABP; PABP1; PABPC2; PABPL1
Swissprot	P11940

Target Background

This gene encodes a poly(A) binding protein. The protein shuttles between the nucleus and cytoplasm and binds to the 3' poly(A) tail of eukaryotic messenger RNAs via RNA-recognition motifs. The binding of this protein to poly(A) promotes ribosome recruitment and translation initiation; it is also required for poly(A) shortening which is the first step in mRNA decay. The gene is part of a small gene family including three protein-coding genes and several pseudogenes.

订购热线: 4008-898-798

Applications

Western blotting

Predicted band size: 71 kDa

Positive control: A549, PC3, Hela and LoVo cells

Recommended dilution: 500-2000

Gel: 8%SDS-PAGE

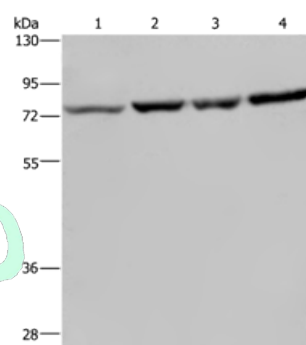
Lysate: 40 µg

Lane 1-4: A549 cells, PC3 cells, Hela cells, LoVo cells

Primary antibody: ml222676(PABPC1 Antibody) at dilution 1/500

Secondary antibody: Goat anti rabbit IgG at 1/8000 dilution

Exposure time: 10 seconds



ELISA

Recommended dilution: 2000-5000

联系电话: 4008-898-798, 021-61725725

联系QQ: 2881505695, 2881505696

邮箱: mlbio_cn@yeah.net

网址: www.mlbio.cn