

## Anti-SOX1 antibody

|                 |   |
|-----------------|---|
| <b>Cat. No.</b> | ml260750  |
| <b>Package</b>  | 25 µl/100 µl/200 µl                                     |
| <b>Storage</b>  | -20°C, pH7.4 PBS, 0.05% NaN <sub>3</sub> , 40% Glycerol |

### Product overview

|                     |                                      |
|---------------------|--------------------------------------|
| <b>Description</b>  | Anti-SOX1 rabbit polyclonal antibody |
| <b>Applications</b> | ELISA, WB                            |
| <b>Immunogen</b>    | Synthetic peptide of human SOX1      |
| <b>Reactivity</b>   | Human, Mouse                         |
| <b>Content</b>      | 0.3 mg/ml                            |
| <b>Host species</b> | Rabbit                               |
| <b>Ig class</b>     | Immunogen-specific rabbit IgG        |
| <b>Purification</b> | Antigen affinity purification        |

### Target information

|                  |                                      |
|------------------|--------------------------------------|
| <b>Symbol</b>    | SOX1                                 |
| <b>Full name</b> | SRY (sex determining region Y)-box 1 |
| <b>Synonyms</b>  |                                      |
| <b>Swissprot</b> | O00570                               |

### Target Background

This intronless gene encodes a member of the SOX (SRY-related HMG-box) family of transcription factors involved in the regulation of embryonic development and in the determination of the cell fate. The encoded protein may act as a transcriptional activator after forming a protein complex with other proteins. In mice, a similar protein regulates the gamma-crystallin genes and is essential for lens development.

订购热线: 4008-898-798

#### Applications

##### Western blotting

Predicted band size: 39 kDa

Positive control: Jurkat cells

Recommended dilution: 200-1000

Gel: 10% SDS-PAGE

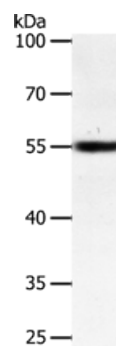
Lysate: 40 µg

Lane: Jurkat cells

Primary antibody: ml260750(SOX1 Antibody) at dilution 1/350

Secondary antibody: Goat anti rabbit IgG at 1/8000 dilution

Exposure time: 20 seconds



##### ELISA

Recommended dilution: 1000-5000

联系电话: 4008-898-798, 021-61725725

联系QQ: 2881505695, 2881505696

邮箱: [mlbio\\_cn@yeah.net](mailto:mlbio_cn@yeah.net)

网址: [www.mlbio.cn](http://www.mlbio.cn)