

Anti-SERPINB3 antibody

Cat. No.	ml222684
Package	25 µl/100 µl/200 µl
Storage	-20°C, pH7.4 PBS, 0.05% NaN ₃ , 40% Glycerol

Product overview

Description	Anti-SERPINB3 rabbit polyclonal antibody
Applications	ELISA, WB
Immunogen	Fusion protein of human SERPINB3
Reactivity	Human
Content	0.2 mg/ml
Host species	Rabbit
Ig class	Immunogen-specific rabbit IgG
Purification	Antigen affinity purification

Target information

Symbol	SERPINB3
Full name	serpin peptidase inhibitor, clade B (ovalbumin), member 3
Synonyms	SCC; T4-A; SCCA1; SCCA-1; HsT1196; SCCA-PD
Swissprot	P29508

Target Background

SERPINB3 (serpin peptidase inhibitor, clade B (ovalbumin), member 3), also known as SCCA1, increase in advancing stages of some cervical, lung, esophageal and head and neck cancers). Human chromosome position 18q21.3 contains a cluster of serpins, including a tandem duplication of the SCCA gene, plasminogen activator inhibitor type 2, and maspin. SCCA is transcribed by two nearly identical genes (SCCA1 and SCCA2), and is mainly produced as SCCA1. The human SCCA1 gene encodes a 390 amino acid protein that was originally isolated from a metastatic cervical squamous cell carcinoma.

订购热线: 4008-898-798

Applications

Western blotting

Predicted band size: 45 kDa

Positive control: Human fetal liver tissue

Recommended dilution: 500-2000

Gel: 8%SDS-PAGE

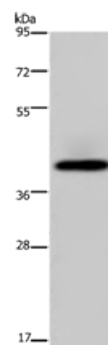
Lysate: 40 µg

Lane: Human fetal liver tissue

Primary antibody: ml222684(SERPINB3 Antibody) at dilution 1/200

Secondary antibody: Goat anti rabbit IgG at 1/8000 dilution

Exposure time: 10 seconds



ELISA

Recommended dilution: 2000-5000

联系电话: 4008-898-798, 021-61725725

联系QQ: 2881505695, 2881505696

邮箱: mlbio_cn@yeah.net

网址: www.mlbio.cn