

Anti-ADAM32 antibody

Cat. No.	D221499
Package	25 µl/100 µl/200 µl
Storage	-20°C, pH7.4 PBS, 0.05% NaN ₃ , 40% Glycerol

Product overview

Description	Anti-ADAM32 rabbit polyclonal antibody
Applications	ELISA, WB, IHC
Immunogen	Fusion protein of human ADAM32
Reactivity	Human
Content	0.1 mg/ml
Host species	Rabbit
Ig class	Immunogen-specific rabbit IgG
Purification	Antigen affinity purification

Target information

Symbol	ADAM32
Full name	ADAM metalloproteinase domain 32
Synonyms	
Swissprot	Q8TC27

Target Background

A number of a disintegrin and metalloprotease (ADAM) family members are expressed in mammalian male reproductive organs such as testis and epididymis. The cDNA sequence of ADAM32 has an open reading frame which encodes 750 (mouse ADAM32) and 787 (human ADAM32) amino acids, sharing 69% homology between the two species. Comparison of amino acid sequences showed that ADAM32 is highly homologous to ADAM2 and ADAM3, sperm surface proteins required for fertilization. We found that the ADAM32 gene is expressed predominantly in the testis.

订购热线: 4008-898-798

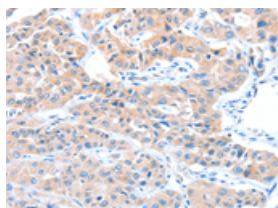
Applications

Immunohistochemistry

Predicted cell location: Cytoplasm

Positive control: Human lung cancer

Recommended dilution: 15-50

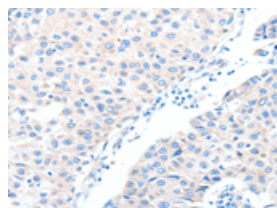


The image on the left is immunohistochemistry of paraffin-embedded Human lung cancer tissue using ml221499(ADAM32 Antibody) at dilution 1/15, on the right is treated with fusion protein. (Original magnification: $\times 200$)

Predicted cell location: Cytoplasm

Positive control: Human breast cancer

Recommended dilution: 15-50



The image on the left is immunohistochemistry of paraffin-embedded Human breast cancer tissue using ml221499(ADAM32 Antibody) at dilution 1/15, on the right is treated with fusion protein. (Original magnification: $\times 200$)

Western blotting

Predicted band size: 88 kDa

Positive control: Human testis tissue

Recommended dilution: 200-1000

Gel: 8%SDS-PAGE

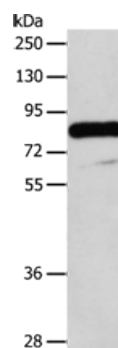
Lysate: 40 μ g

Lane: Human testis tissue

Primary antibody: ml221499(ADAM32 Antibody) at dilution 1/100

Secondary antibody: Goat anti rabbit IgG at 1/8000 dilution

Exposure time: 10 minutes



ELISA

Recommended dilution: 1000-2000

联系电话: 4008-898-798, 021-61725725

联系QQ: 2881505695, 2881505696

邮箱: mlbio_cn@yeah.net

网址: www.mlbio.cn