

Anti-AGA antibody

Cat. No.	D221533
Package	25 µl/100 µl/200 µl
Storage	-20°C, pH7.4 PBS, 0.05% NaN ₃ , 40% Glycerol

Product overview

Description	Anti-AGA rabbit polyclonal antibody
Applications	ELISA, WB, IHC
Immunogen	Fusion protein of human AGA
Reactivity	Human, Mouse, Rat
Content	0.2 mg/ml
Host species	Rabbit
Ig class	Immunogen-specific rabbit IgG
Purification	Antigen affinity purification

Target information

Symbol	AGA
Full name	Aspartylglucosaminidase
Synonyms	GA; AGU; ASRG
Swissprot	P20933

Target Background

Aspartylglucosaminidase is involved in the catabolism of N-linked oligosaccharides of glycoproteins. It cleaves asparagine from N-acetylglucosamines as one of the final steps in the lysosomal breakdown of glycoproteins. The lysosomal storage disease aspartylglycosaminuria is caused by a deficiency in the AGA enzyme. Alternatively spliced transcript variants have been identified.

订购热线: 4008-898-798

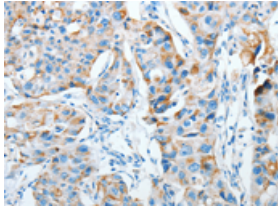
Applications

Immunohistochemistry

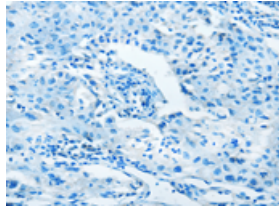
Predicted cell location: Cytoplasm

Positive control: Human breast cancer

Recommended dilution: 15-50



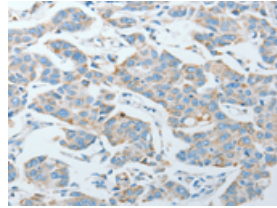
The image on the left is immunohistochemistry of paraffin-embedded Human breast cancer tissue using ml221533(AGA Antibody) at dilution 1/20, on the right is treated with fusion protein. (Original magnification: $\times 200$)



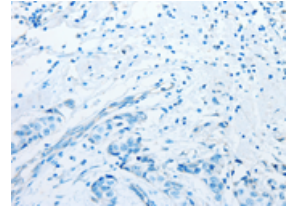
Predicted cell location: Cytoplasm

Positive control: Human lung cancer

Recommended dilution: 15-50



The image on the left is immunohistochemistry of paraffin-embedded Human lung cancer tissue using ml221533(AGA Antibody) at dilution 1/20, on the right is treated with fusion protein. (Original magnification: $\times 200$)



Western blotting

Predicted band size: 37 kDa

Positive control: Mouse kidney tissue, human testis and thyroid cancer tissue

Recommended dilution: 200-1000

Gel: 10% SDS-PAGE

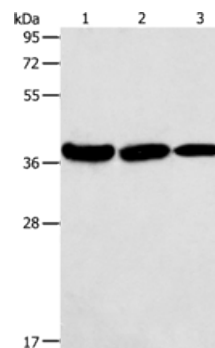
Lysate: 40 μ g

Lane 1-3: Mouse kidney tissue, human testis tissue, Human thyroid cancer tissue

Primary antibody: ml221533(AGA Antibody) at dilution 1/100

Secondary antibody: Goat anti rabbit IgG at 1/8000 dilution

Exposure time: 10 seconds



ELISA

Recommended dilution: 1000-2000

联系电话: 4008-898-798, 021-61725725

联系QQ: 2881505695, 2881505696

邮箱: mlbio_cn@yeah.net

网址: www.mlbio.cn