

Anti-AGBL2 antibody

Cat. No.	D221534
Package	25 µl/100 µl/200 µl
Storage	-20°C, pH7.4 PBS, 0.05% NaN ₃ , 40% Glycerol

Product overview

Description	Anti-AGBL2 rabbit polyclonal antibody
Applications	ELISA, WB, IHC
Immunogen	Fusion protein of human AGBL2
Reactivity	Human
Content	0.1 mg/ml
Host species	Rabbit
Ig class	Immunogen-specific rabbit IgG
Purification	Antigen affinity purification

Target information

Symbol	AGBL2
Full name	ATP/GTP binding protein-like 2
Synonyms	CCP2
Swissprot	Q5U5Z8

Target Background

AGBL2 is a 902 amino acid cytoplasmic protein belonging to the peptidase M14 family. CCP2 is considered a metallocarboxypeptidase that may play a role in the processing of tubulin. CCP2 binds one zinc ion per subunit as a cofactor and exists as three alternatively spliced isoforms.

订购热线: 4008-898-798

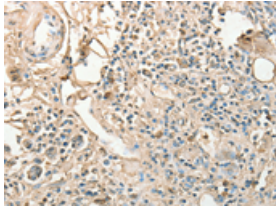
Applications

Immunohistochemistry

Predicted cell location: Cytoplasm

Positive control: Human gastric cancer

Recommended dilution: 25-100

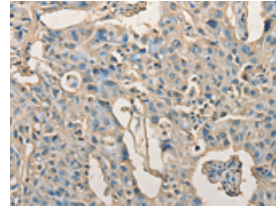


The image on the left is immunohistochemistry of paraffin-embedded Human gastric cancer tissue using ml221534(AGBL2 Antibody) at dilution 1/25, on the right is treated with fusion protein. (Original magnification: $\times 200$)

Predicted cell location: Cytoplasm

Positive control: Human lung cancer

Recommended dilution: 25-100



The image on the left is immunohistochemistry of paraffin-embedded Human lung cancer tissue using ml221534(AGBL2 Antibody) at dilution 1/25, on the right is treated with fusion protein. (Original magnification: $\times 200$)

Western blotting

Predicted band size: 104 kDa

Positive control: 293T cell

Recommended dilution: 200-1000

Gel: 6%SDS-PAGE

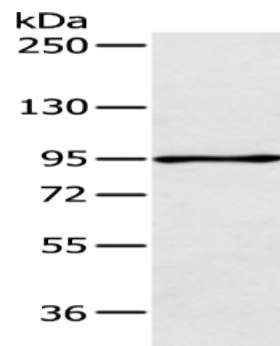
Lysate: 40 μ g

Lane: 293T cell

Primary antibody: ml221534(AGBL2 Antibody) at dilution 1/200

Secondary antibody: Goat anti rabbit IgG at 1/8000 dilution

Exposure time: 1 minute



ELISA

Recommended dilution: 1000-2000

联系电话: 4008-898-798, 021-61725725

联系QQ: 2881505695, 2881505696

邮箱: mlbio_cn@yeah.net

网址: www.mlbio.cn