

Anti-NAT10 antibody

Cat. No.	ml222730
Package	25 µl/100 µl/200 µl
Storage	-20°C, pH7.4 PBS, 0.05% NaN ₃ , 40% Glycerol

Product overview

Description	Anti-NAT10 rabbit polyclonal antibody
Applications	ELISA, WB
Immunogen	Fusion protein of human NAT10
Reactivity	Human, Mouse
Content	0.3 mg/ml
Host species	Rabbit
Ig class	Immunogen-specific rabbit IgG
Purification	Antigen affinity purification

Target information

Symbol	NAT10
Full name	N-acetyltransferase 10 (GCN5-related)
Synonyms	ALP; NET43
Swissprot	Q9H0A0

Target Background

NAT-10 (N-acetyltransferase 10) is a nuclear protein that belongs to the UPF0202 family. It has a single N-acetyltransferase domain that likely functions as a histone acetyltransferase. NAT10 functions primarily to regulate the activity of telomerase. It is upregulated in response to DNA damage and is likely to take part in genotoxic resistance and DNA repair. NAT-10 has a high binding potential for the promoter region of TERT which stimulates the production of telomerase. These varieties of function imply that human telomerase complexes have multiple functions rather than specific duties.

订购热线: 4008-898-798

Applications

Western blotting

Predicted band size: 116 kDa

Positive control: A549, K562 and hela cells

Recommended dilution: 500-2000

Gel: 6%SDS-PAGE

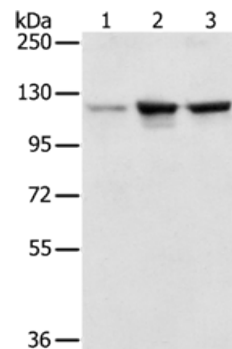
Lysate: 50 µg

Lane 1-3: A549 cells, K562 cells, hela cells

Primary antibody: ml222730(NAT10 Antibody) at dilution 1/200

Secondary antibody: Goat anti rabbit IgG at 1/8000 dilution

Exposure time: 10 seconds



ELISA

Recommended dilution: 2000-5000

联系电话: 4008-898-798, 021-61725725

联系QQ: 2881505695, 2881505696

邮箱: mlbio_cn@yeah.net

网址: www.mlbio.cn