

## Anti-NDUFA10 antibody

<b>Cat. No.</b>	ml222734
<b>Package</b>	25 µl/100 µl/200 µl
<b>Storage</b>	-20°C, pH7.4 PBS, 0.05% NaN <sub>3</sub> , 40% Glycerol

### Product overview

<b>Description</b>	Anti-NDUFA10 rabbit polyclonal antibody
<b>Applications</b>	ELISA, WB, IHC
<b>Immunogen</b>	Fusion protein of human NDUFA10
<b>Reactivity</b>	Human
<b>Content</b>	0.4 mg/ml
<b>Host species</b>	Rabbit
<b>Ig class</b>	Immunogen-specific rabbit IgG
<b>Purification</b>	Antigen affinity purification

### Target information

<b>Symbol</b>	NDUFA10
<b>Full name</b>	NADH dehydrogenase (ubiquinone) 1 alpha subcomplex, 10, 42kDa

**Synonyms** CI-42k; CI-42KD

**Swissprot** O95299

#### **Target Background**

The protein encoded by this gene belongs to the complex I 42kDA subunit family. Mammalian complex I is the first enzyme complex in the electron transport chain of mitochondria. It is composed of 45 different subunits. This protein is a component of the hydrophobic protein fraction and has NADH dehydrogenase activity and oxidoreductase activity. It transfers electrons from NADH to the respiratory chain.

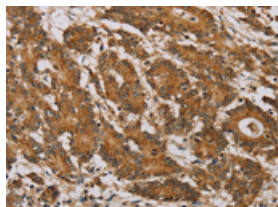
## Applications

### Immunohistochemistry

Predicted cell location: Cytoplasm

Positive control: Human colon cancer

Recommended dilution: 50-200

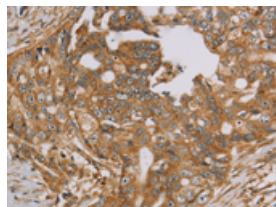


The image on the left is immunohistochemistry of paraffin-embedded Human colon cancer tissue using ml222734(NDUFA10 Antibody) at dilution 1/40, on the right is treated with fusion protein. (Original magnification:  $\times 200$ )

Predicted cell location: Cytoplasm

Positive control: Human cervical cancer

Recommended dilution: 50-200



The image on the left is immunohistochemistry of paraffin-embedded Human cervical cancer tissue using ml222734(NDUFA10 Antibody) at dilution 1/40, on the right is treated with fusion protein. (Original magnification:  $\times 200$ )

### Western blotting

Predicted band size: 41 kDa

Positive control: Hela and A549 cells

Recommended dilution: 200-1000

Gel: 8%SDS-PAGE

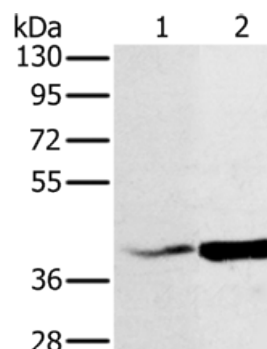
Lysate: 40 µg

Lane 1-2: Hela cells, A549 cells

Primary antibody: ml222734(NDUFA10 Antibody) at dilution 1/500

Secondary antibody: Goat anti rabbit IgG at 1/8000 dilution

Exposure time: 5 minutes



#### ELISA

Recommended dilution: 1000-2000

联系电话: 4008-898-798, 021-61725725

联系QQ: 2881505695, 2881505696

邮箱: [mlbio\\_cn@yeah.net](mailto:mlbio_cn@yeah.net)

网址: [www.mlbio.cn](http://www.mlbio.cn)