

Anti-NDUFA1 antibody

Cat. No.	ml222736
Package	25 µl/100 µl/200 µl
Storage	-20°C, pH7.4 PBS, 0.05% NaN ₃ , 40% Glycerol

Product overview

Description	Anti-NDUFA1 rabbit polyclonal antibody
Applications	ELISA, WB, IHC
Immunogen	Fusion protein of human NDUFA1
Reactivity	Human
Content	1 mg/ml
Host species	Rabbit
Ig class	Immunogen-specific rabbit IgG
Purification	Antigen affinity purification

Target information

Symbol	NDUFA1
Full name	NADH dehydrogenase (ubiquinone) 1 alpha subcomplex, 1, 7.5kDa

Synonyms MWFE; ZNF183; CI-MWFE

Swissprot O15239

Target Background

The human NDUFA1 gene codes for an essential component of complex I of the respiratory chain, which transfers electrons from NADH to ubiquinone. It has been noted that the N-terminal hydrophobic domain has the potential to be folded into an alpha-helix spanning the inner mitochondrial membrane with a C-terminal hydrophilic domain interacting with globular subunits of complex I. The highly conserved two-domain structure suggests that this feature is critical for the protein function and might act as an anchor for the NADH:ubiquinone oxidoreductase complex at the inner mitochondrial membrane.

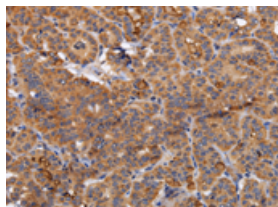
Applications

Immunohistochemistry

Predicted cell location: Cytoplasm

Positive control: Human thyroid cancer

Recommended dilution: 100-300

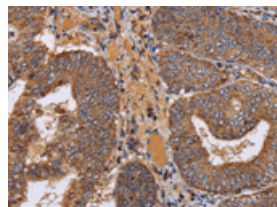


The image on the left is immunohistochemistry of paraffin-embedded Human thyroid cancer tissue using ml222736(NDUFA1 Antibody) at dilution 1/70, on the right is treated with fusion protein. (Original magnification: $\times 200$)

Predicted cell location: Cytoplasm

Positive control: Human colon cancer

Recommended dilution: 100-300



The image on the left is immunohistochemistry of paraffin-embedded Human colon cancer tissue using ml222736(NDUFA1 Antibody) at dilution 1/70, on the right is treated with fusion protein. (Original magnification: $\times 200$)

Western blotting

Predicted band size: 8 kDa

Positive control: Hela cells

Recommended dilution: 500-2000

Gel: 10%SDS-PAGE

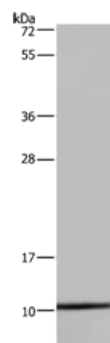
Lysate: 40 µg

Lane: HeLa cells

Primary antibody: ml222736(NDUFA1 Antibody) at dilution 1/400

Secondary antibody: Goat anti rabbit IgG at 1/8000 dilution

Exposure time: 10 seconds



ELISA

Recommended dilution: 2000-5000

联系电话: 4008-898-798, 021-61725725

联系QQ: 2881505695, 2881505696

邮箱: mlbio_cn@yeah.net

网址: www.mlbio.cn