

Anti-NDUFA6 antibody

Cat. No.	ml222740
Package	25 µl/100 µl/200 µl
Storage	-20°C, pH7.4 PBS, 0.05% NaN ₃ , 40% Glycerol

Product overview

Description	Anti-NDUFA6 rabbit polyclonal antibody
Applications	ELISA, WB
Immunogen	Fusion protein of human NDUFA6
Reactivity	Human, Mouse
Content	0.3 mg/ml
Host species	Rabbit
Ig class	Immunogen-specific rabbit IgG
Purification	Antigen affinity purification

Target information

Symbol	NDUFA6
Full name	NADH dehydrogenase (ubiquinone) 1 alpha subcomplex, 6, 14kDa
Synonyms	B14; LYRM6; CI-B14; NADHB14
Swissprot	P56556

Target Background

NDUFA6 (NADH dehydrogenase (ubiquinone) 1 alpha subcomplex, 6), also known as LYRM6 (LYR motif-containing protein 6), NADHB14 or B14, is a 128 amino acid protein that localizes to the matrix side of the mitochondrial membrane and belongs to the complex I LYR family. Existing as a subunit of the multi-protein membrane respiratory chain NADH dehydrogenase complex (Complex I), NDUFA6 functions as an accessory protein that facilitates the transfer of electrons from NADH to the respiratory chain.

订购热线: 4008-898-798

Applications

Western blotting

Predicted band size: 18 kDa

Positive control: Human normal kidney tissue

Recommended dilution: 200-1000

Gel: 10%SDS-PAGE

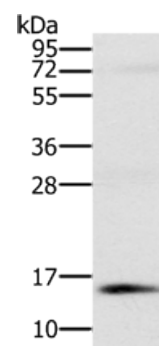
Lysate: 40 µg

Lane: Human normal kidney tissue

Primary antibody: ml222740(NDUFA6 Antibody) at dilution 1/250

Secondary antibody: Goat anti rabbit IgG at 1/8000 dilution

Exposure time: 1 minute



ELISA

Recommended dilution: 1000-2000

联系电话: 4008-898-798, 021-61725725

联系QQ: 2881505695, 2881505696

邮箱: mlbio_cn@yeah.net

网址: www.mlbio.cn