

Anti-ALDH4A1 antibody

Cat. No.	ml221569
Package	25 µl/100 µl/200 µl
Storage	-20°C, pH7.4 PBS, 0.05% NaN ₃ , 40% Glycerol

Product overview

Description	Anti-ALDH4A1 rabbit polyclonal antibody
Applications	ELISA, WB, IHC
Immunogen	Fusion protein of human ALDH4A1
Reactivity	Human, Mouse, Rat
Content	0.3 mg/ml
Host species	Rabbit
Ig class	Immunogen-specific rabbit IgG
Purification	Antigen affinity purification

Target information

Symbol	ALDH4A1
Full name	aldehyde dehydrogenase 4 family, member A1

Synonyms P5CD; ALDH4; P5C

Swissprot P30038

Target Background

This protein belongs to the aldehyde dehydrogenase family of proteins. This enzyme is a mitochondrial matrix NAD-dependent dehydrogenase which catalyzes the second step of the proline degradation pathway, converting pyrroline-5-carboxylate to glutamate. Deficiency of this enzyme is associated with type II hyperprolinemia, an autosomal recessive disorder characterized by accumulation of delta-1-pyrroline-5-carboxylate (P5C) and proline. Alternatively spliced transcript variants encoding different isoforms have been identified for this gene.

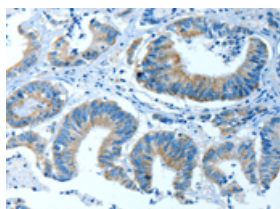
Applications

Immunohistochemistry

Predicted cell location: Cytoplasm

Positive control: Human colon cancer

Recommended dilution: 25-100

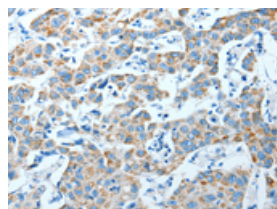


The image on the left is immunohistochemistry of paraffin-embedded Human colon cancer tissue using ml221569(ALDH4A1 Antibody) at dilution 1/35, on the right is treated with fusion protein. (Original magnification: $\times 200$)

Predicted cell location: Cytoplasm

Positive control: Human breast cancer

Recommended dilution: 25-100



The image on the left is immunohistochemistry of paraffin-embedded Human breast cancer tissue using ml221569(ALDH4A1 Antibody) at dilution 1/35, on the right is treated with fusion protein. (Original magnification: $\times 200$)

Western blotting

Predicted band size: 62 kDa

Positive control: Human fetal liver tissue

Recommended dilution: 500-2000

Gel: 10%SDS-PAGE

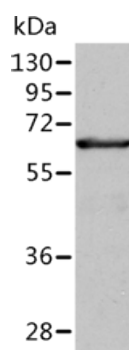
Lysate: 40 μ g

Lane: Human fetal liver tissue

Primary antibody: ml221569(ALDH4A1 Antibody) at dilution 1/350

Secondary antibody: Goat anti rabbit IgG at 1/8000 dilution

Exposure time: 30 seconds



ELISA

Recommended dilution: 2000-5000

联系电话: 4008-898-798, 021-61725725

联系QQ: 2881505695, 2881505696

邮箱: mlbio_cn@yeah.net

网址: www.mlbio.cn