

Anti-KIRREL2 antibody

Cat. No.	ml222769
Package	25 µl/100 µl/200 µl
Storage	-20°C, pH7.4 PBS, 0.05% NaN ₃ , 40% Glycerol

Product overview

Description	Anti-KIRREL2 rabbit polyclonal antibody
Applications	ELISA, WB
Immunogen	Fusion protein of human KIRREL2
Reactivity	Human, Mouse
Content	0.2 mg/ml
Host species	Rabbit
Ig class	Immunogen-specific rabbit IgG
Purification	Antigen affinity purification

Target information

Symbol	KIRREL2
Full name	kin of IRRE like 2 (Drosophila)
Synonyms	NLG1; NEPH3; FILTRIN
Swissprot	Q6UWL6

Target Background

KIRREL2 is a 708 amino acid protein that is a member of the immunoglobulin superfamily of cell adhesion molecules. NEPH3 consists of five extracellular Ig-like repeats, a transmembrane domain, several glycosylation sites and a cytoplasmic domain that has a stretch of nine conserved residues. NEPH3 localizes to the interpodocyte filtration slit in the kidney and to the Langerhans islet beta cells in the pancreas.

订购热线: 4008-898-798

Applications

Western blotting

Predicted band size: 75 kDa

Positive control: Human testis tissue, Jurkat cells and mouse liver tissue

Recommended dilution: 500-2000

Gel: 6%SDS-PAGE

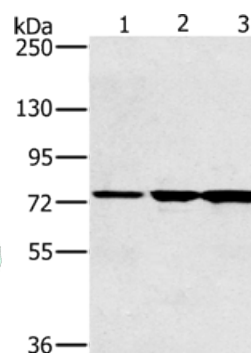
Lysate: 40 µg

Lane 1-3: Human testis tissue, Jurkat cells, mouse liver tissue

Primary antibody: ml222769(KIRREL2 Antibody) at dilution 1/500

Secondary antibody: Goat anti rabbit IgG at 1/8000 dilution

Exposure time: 15 seconds



ELISA

Recommended dilution: 2000-5000

联系电话: 4008-898-798, 021-61725725

联系QQ: 2881505695, 2881505696

邮箱: mlbio_cn@yeah.net

网址: www.mlbio.cn