

Anti-SGK2 antibody

Cat. No.	ml260926
Package	25 µl/100 µl/200 µl
Storage	-20°C, pH7.4 PBS, 0.05% NaN ₃ , 40% Glycerol

Product overview

Description	Anti-SGK2 rabbit polyclonal antibody
Applications	ELISA, WB, IHC
Immunogen	Synthetic peptide of human SGK2
Reactivity	Human, Mouse, Rat
Content	0.3 mg/ml
Host species	Rabbit
Ig class	Immunogen-specific rabbit IgG
Purification	Antigen affinity purification

Target information

Symbol	SGK2
Full name	serum/glucocorticoid regulated kinase 2

Synonyms H-SGK2; dJ138B7.2

Swissprot Q9HBY8

Target Background

This gene encodes a serine/threonine protein kinase. Although this gene product is similar to serum- and glucocorticoid-induced protein kinase (SGK), this gene is not induced by serum or glucocorticoids. This gene is induced in response to signals that activate phosphatidylinositol 3-kinase, which is also true for SGK. Alternative splicing results in multiple transcript variants

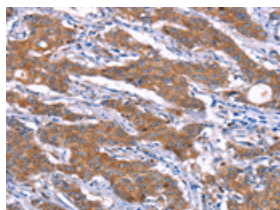
Applications

Immunohistochemistry

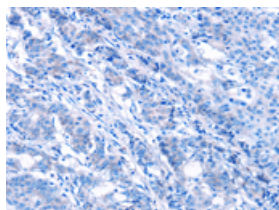
Predicted cell location: Cytoplasm

Positive control: Human gasrtic cancer

Recommended dilution: 25-100



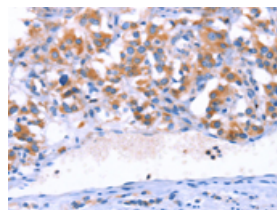
The image on the left is immunohistochemistry of paraffin-embedded Human gasrtic cancer tissue using ml260926(SGK2 Antibody) at dilution 1/15, on the right is treated with synthetic peptide. (Original magnification: ×200)



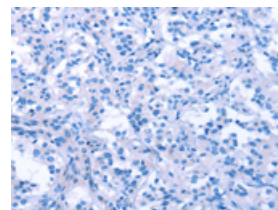
Predicted cell location: Cytoplasm

Positive control: Human thyroid cancer

Recommended dilution: 25-100



The image on the left is immunohistochemistry of paraffin-embedded Human thyroid cancer tissue using ml260926(SGK2 Antibody) at dilution 1/15, on the right is treated with synthetic peptide. (Original magnification: ×200)



Western blotting

Predicted band size:48 kDa

Positive control:Mouse liver tissue

Recommended dilution: 200-1000

Gel: 6%SDS-PAGE

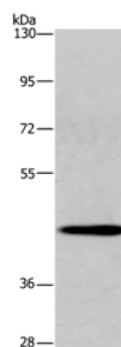
Lysate: 40 μ g

Lane: Mouse liver tissue

Primary antibody: ml260926(SGK2 Antibody) at dilution 1/200

Secondary antibody: Goat anti rabbit IgG at 1/8000 dilution

Exposure time: 20 seconds



ELISA

Recommended dilution: 1000-2000

联系电话: 4008-898-798, 021-61725725

联系QQ: 2881505695, 2881505696

邮箱: mlbio_cn@yeah.net

网址: www.mlbio.cn