

Anti-STRADB antibody

Cat. No.	ml221596
Package	25 µl/100 µl/200 µl
Storage	-20°C, pH7.4 PBS, 0.05% NaN ₃ , 40% Glycerol

Product overview

Description	Anti-STRADB rabbit polyclonal antibody
Applications	ELISA, WB, IHC
Immunogen	Fusion protein of human STRADB
Reactivity	Human, Mouse
Content	0.1 mg/ml
Host species	Rabbit
Ig class	Immunogen-specific rabbit IgG
Purification	Antigen affinity purification

Target information

Symbol	STRADB
Full name	STE20-related kinase adaptor beta

Synonyms PAPK; ILPIP; ILPIPA; ALS2CR2; CALS-21; PRO1038

Swissprot Q9C0K7

Target Background

This gene encodes a protein that belongs to the serine/threonine protein kinase STE20 subfamily. One of the active site residues in the protein kinase domain of this protein is altered, and it is thus a pseudokinase. This protein is a component of a complex involved in the activation of serine/threonine kinase 11, a master kinase that regulates cell polarity and energy-generating metabolism. This complex regulates the relocation of this kinase from the nucleus to the cytoplasm, and it is essential for G1 cell cycle arrest mediated by this kinase. The protein encoded by this gene can also interact with the X chromosome-linked inhibitor of apoptosis protein, and this interaction enhances the anti-apoptotic activity of this protein via the JNK1 signal transduction pathway. Two pseudogenes, located on chromosomes 1 and 7, have been found for this gene. Alternatively spliced transcript variants encoding different isoforms have been found for this gene.

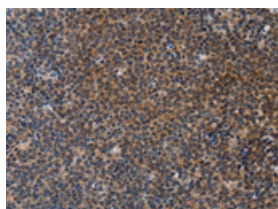
Applications

Immunohistochemistry

Predicted cell location: Cytoplasm

Positive control: Human lymphoma

Recommended dilution: 25-100

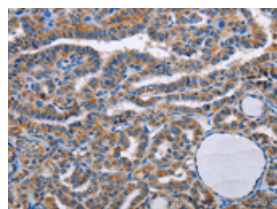


The image on the left is immunohistochemistry of paraffin-embedded Human lymphoma tissue using ml221596(STRADB Antibody) at dilution 1/20, on the right is treated with fusion protein. (Original magnification: $\times 200$)

Predicted cell location: Cytoplasm

Positive control: Human thyroid cancer

Recommended dilution: 25-100



The image on the left is immunohistochemistry of paraffin-embedded Human thyroid cancer tissue using ml221596(STRADB Antibody) at dilution 1/20, on the right is treated with fusion protein. (Original magnification: $\times 200$)

Western blotting

Predicted band size: 47 kDa; 31 kDa

Positive control: Mouse pancreas and spleen tissue, mouse heart tissue and 293T cells

Recommended dilution: 200-1000

Gel: 10%SDS-PAGE

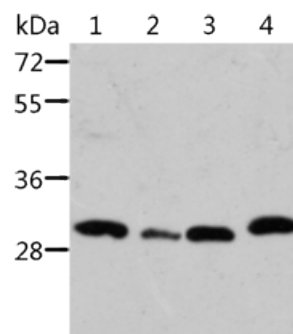
Lysate: 40 µg

Lane 1-4: Mouse pancreas tissue, Mouse spleen tissue, mouse heart tissue, 293T cells

Primary antibody: ml221596(STRADB Antibody) at dilution 1/500

Secondary antibody: Goat anti rabbit IgG at 1/8000 dilution

Exposure time: 10 minutes



ELISA

Recommended dilution: 2000-5000

联系电话: 4008-898-798, 021-61725725

联系QQ: 2881505695, 2881505696

邮箱: mlbio_cn@yeah.net

网址: www.mlbio.cn