

Anti-PRKG2 antibody

Cat. No.	ml260929
Package	25 µl/100 µl/200 µl
Storage	-20°C, pH7.4 PBS, 0.05% NaN ₃ , 40% Glycerol

Product overview

Description	Anti-PRKG2 rabbit polyclonal antibody
Applications	ELISA, WB, IHC
Immunogen	Synthetic peptide of human PRKG2
Reactivity	Human, Mouse, Rat
Content	0.2 mg/ml
Host species	Rabbit
Ig class	Immunogen-specific rabbit IgG
Purification	Antigen affinity purification

Target information

Symbol	PRKG2
Full name	protein kinase, cGMP-dependent, type II

Synonyms cGKII; PRKGR2

Swissprot Q13237

Target Background

cGKII (cGMP-dependent protein kinase type II) is a major receptor of intracellular cGMP and mediates a plethora of physiological responses. cGKII contains a conserved leucine zipper motif at the amino-terminus. It is expressed in small intestine, colon, prostate, and human brain tissues, and the cGKII gene maps to chromosome 4q13.1-q21.1. cGKII has been shown to regulate the ion transport system in the intestine. Myristoylation of the penultimate glycine in cGKII appears to be essential for directing cGKII to the membrane, since cGKII is devoid of any hydrophobic transmembrane domains. The translocation of cGKII from the cytosol to the membrane allows it to function properly in regulating intestinal ion transport.

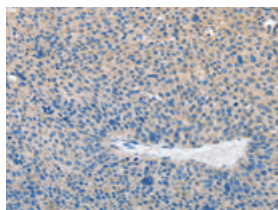
Applications

Immunohistochemistry

Predicted cell location: Cytoplasm

Positive control: Human liver cancer

Recommended dilution: 25-100

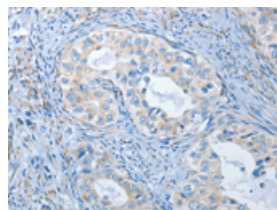


The image on the left is immunohistochemistry of paraffin-embedded Human liver cancer tissue using ml260929(PRKG2 Antibody) at dilution 1/20, on the right is treated with synthetic peptide. (Original magnification: $\times 200$)

Predicted cell location: Cytoplasm

Positive control: Human cervical cancer

Recommended dilution: 25-100



The image on the left is immunohistochemistry of paraffin-embedded Human cervical cancer tissue using ml260929(PRKG2 Antibody) at dilution 1/20, on the right is treated with synthetic peptide. (Original magnification: $\times 200$)

Western blotting

Predicted band size: 87 kDa

Positive control: Mouse brain and lung tissue

Recommended dilution: 200-1000

Gel: 8%SDS-PAGE

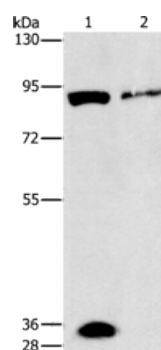
Lysate: 50 μ g

Lane 1-2: Mouse brain tissue, Mouse lung tissue

Primary antibody: ml260929(PRKG2 Antibody) at dilution 1/160

Secondary antibody: Goat anti rabbit IgG at 1/8000 dilution

Exposure time: 30 seconds



ELISA

Recommended dilution: 2000-5000

联系电话: 4008-898-798, 021-61725725

联系QQ: 2881505695, 2881505696

邮箱: mlbio_cn@yeah.net

网址: www.mlbio.cn