

Anti-MAGEA3 antibody

Cat. No.	ml260932
Package	25 µl/100 µl/200 µl
Storage	-20°C, pH7.4 PBS, 0.05% NaN ₃ , 40% Glycerol

Product overview

Description	Anti-MAGEA3 rabbit polyclonal antibody
Applications	ELISA, WB
Immunogen	Synthetic peptide of human MAGEA3
Reactivity	Human
Content	0.2 mg/ml
Host species	Rabbit
Ig class	Immunogen-specific rabbit IgG
Purification	Antigen affinity purification

Target information

Symbol	MAGEA3
Full name	melanoma antigen family A, 3
Synonyms	HIP8; HYPD; CT1.3; MAGE3; MAGEA6
Swissprot	P43357

Target Background

This gene is a member of the MAGEA gene family. The members of this family encode proteins with 50 to 80% sequence identity to each other. The promoters and first exons of the MAGEA genes show considerable variability, suggesting that the existence of this gene family enables the same function to be expressed under different transcriptional controls. The MAGEA genes are clustered at chromosomal location Xq28. They have been implicated in some hereditary disorders, such as dyskeratosis congenita.

订购热线: 4008-898-798

Applications

Western blotting

Predicted band size: 35 kDa

Positive control: Human testis tissue

Recommended dilution: 200-1000

Gel: 12% SDS-PAGE

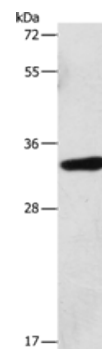
Lysate: 40 µg

Lane: Human testis tissue

Primary antibody: ml260932 (MAGEA3 Antibody) at dilution 1/325

Secondary antibody: Goat anti rabbit IgG at 1/8000 dilution

Exposure time: 40 seconds



ELISA

Recommended dilution: 1000-2000

联系电话: 4008-898-798, 021-61725725

联系QQ: 2881505695, 2881505696

邮箱: mlbio_cn@yeah.net

网址: www.mlbio.cn