

## Anti-OLFM3 antibody

<b>Cat. No.</b>	ml222805
<b>Package</b>	25 µl/100 µl/200 µl
<b>Storage</b>	-20°C, pH7.4 PBS, 0.05% NaN <sub>3</sub> , 40% Glycerol

### Product overview

<b>Description</b>	Anti-OLFM3 rabbit polyclonal antibody
<b>Applications</b>	ELISA, WB
<b>Immunogen</b>	Fusion protein of human OLFM3
<b>Reactivity</b>	Human, Mouse, Rat
<b>Content</b>	0.2 mg/ml
<b>Host species</b>	Rabbit
<b>Ig class</b>	Immunogen-specific rabbit IgG
<b>Purification</b>	Antigen affinity purification

### Target information

<b>Symbol</b>	OLFM3
<b>Full name</b>	olfactomedin 3
<b>Synonyms</b>	NOE3; NOELIN3; OPTIMEDIN
<b>Swissprot</b>	Q96PB7

### Target Background

OLFM3 (olfactomedin 3), also known as NOE3, is a 478 amino acid protein that interacts with myocilin. Myocilin is an extracellular protein that plays a key role in the actomyosin system and is responsible for controlling intraocular pressure. OLFM3 is a secreted protein that contains an olfactomedin-like (OLF) domain, an approximately 260 amino acid motif commonly found in secreted glycoproteins. OLFM3 localizes to the Golgi apparatus of the cell and is highly expressed in both eye and brain tissue. Mutations in the gene that encodes OLFM3 may cause severe glaucoma, a condition in which increased intraocular pressure within the eyeball causes loss of eye sight.

订购热线: 4008-898-798

#### Applications

##### Western blotting

Predicted band size: 55 kDa

Positive control: Mouse intestines tissue

Recommended dilution: 200-1000

Gel: 6%SDS-PAGE

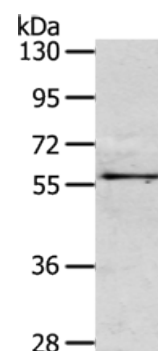
Lysate: 40 µg

Lane: Mouse intestines tissue

Primary antibody: ml222805(OLFM3 Antibody) at dilution 1/200

Secondary antibody: Goat anti rabbit IgG at 1/8000 dilution

Exposure time: 2 minutes



##### ELISA

Recommended dilution: 1000-2000

联系电话: 4008-898-798, 021-61725725

联系QQ: 2881505695, 2881505696

邮箱: [mlbio\\_cn@yeah.net](mailto:mlbio_cn@yeah.net)

网址: [www.mlbio.cn](http://www.mlbio.cn)