

Anti-OLFM4 antibody

Cat. No.	ml222806
Package	25 µl/100 µl/200 µl
Storage	-20°C, pH7.4 PBS, 0.05% NaN ₃ , 40% Glycerol

Product overview

Description	Anti-OLFM4 rabbit polyclonal antibody
Applications	ELISA, WB
Immunogen	Fusion protein of human OLFM4
Reactivity	Human
Content	0.2 mg/ml
Host species	Rabbit
Ig class	Immunogen-specific rabbit IgG
Purification	Antigen affinity purification

Target information

Symbol	OLFM4
Full name	olfactomedin 4
Synonyms	GC1; OLM4; OlfD; GW112; hGC-1; hOLFID; UNQ362; bA209J19.1
Swissprot	Q6UX06

Target Background

This gene was originally cloned from human myeloblasts and found to be selectively expressed in inflamed colonic epithelium. This gene encodes a member of the olfactomedin family. The encoded protein is an antiapoptotic factor that promotes tumor growth and is an extracellular matrix glycoprotein that facilitates cell adhesion.

订购热线: 4008-898-798

Applications

Western blotting

Predicted band size: 57 kDa

Positive control: Human normal colon sigmoideum tissue

Recommended dilution: 200-1000

Gel: 6%SDS-PAGE

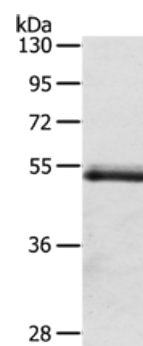
Lysate: 40 µg

Lane: Human normal colon sigmoideum tissue

Primary antibody: ml222806(OLFM4 Antibody) at dilution 1/200

Secondary antibody: Goat anti rabbit IgG at 1/8000 dilution

Exposure time: 3 minutes



ELISA

Recommended dilution: 1000-2000

联系电话: 4008-898-798, 021-61725725

联系QQ: 2881505695, 2881505696

邮箱: mlbio_cn@yeah.net

网址: www.mlbio.cn