

Anti-APOBEC3G antibody

| | |
|-----------------|---|
| Cat. No. | ml221663 |
| Package | 25 µl/100 µl/200 µl |
| Storage | -20°C, pH7.4 PBS, 0.05% NaN ₃ , 40% Glycerol |

Product overview

| | |
|---------------------|--|
| Description | Anti-APOBEC3G rabbit polyclonal antibody |
| Applications | ELISA, WB, IHC |
| Immunogen | Fusion protein of human APOBEC3G |
| Reactivity | Human |
| Content | 0.3 mg/ml |
| Host species | Rabbit |
| Ig class | Immunogen-specific rabbit IgG |
| Purification | Antigen affinity purification |

Target information

| | |
|------------------|---|
| Symbol | APOBEC3G |
| Full name | apolipoprotein B mRNA editing enzyme, catalytic polypeptide-like 3G |

Synonyms A3G; ARCD; ARP9; ARP-9; CEM15; CEM-15; MDS019; bK150C2.7; dJ494G10.1

Swissprot Q9HC16

Target Background

This gene is a member of the cytidine deaminase gene family. It is one of seven related genes or pseudogenes found in a cluster, thought to result from gene duplication, on chromosome 22. Members of the cluster encode proteins that are structurally and functionally related to the C to U RNA-editing cytidine deaminase APOBEC1. It is thought that the proteins may be RNA editing enzymes and have roles in growth or cell cycle control. The protein encoded by this gene has been found to be a specific inhibitor of human immunodeficiency virus-1 (HIV-1) infectivity.

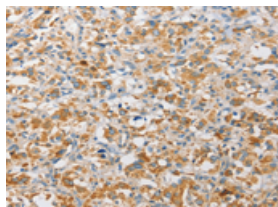
Applications

Immunohistochemistry

Predicted cell location: Cytoplasm

Positive control: Human thyroid cancer

Recommended dilution: 25-100

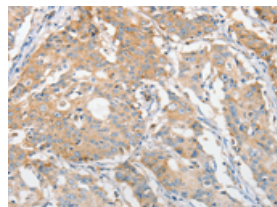


The image on the left is immunohistochemistry of paraffin-embedded Human thyroid cancer tissue using ml221663(APOBEC3G Antibody) at dilution 1/30, on the right is treated with fusion protein. (Original magnification: $\times 200$)

Predicted cell location: Cytoplasm

Positive control: Human gastric cancer

Recommended dilution: 25-100



The image on the left is immunohistochemistry of paraffin-embedded Human gastric cancer tissue using ml221663(APOBEC3G Antibody) at dilution 1/30, on the right is treated with fusion protein. (Original magnification: $\times 200$)

Western blotting

Predicted band size: 46 kDa

Positive control: PC3, Jurkat and Raji cells

Recommended dilution: 200-1000

Gel: 12%SDS-PAGE

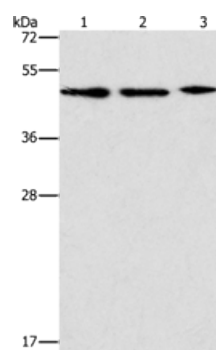
Lysate: 40 μ g

Lane 1-3: PC3 cells, Jurkat cells, Raji cells

Primary antibody: ml221663(APOBEC3G Antibody) at dilution 1/240

Secondary antibody: Goat anti rabbit IgG at 1/8000 dilution

Exposure time: 30 seconds



ELISA

Recommended dilution: 1000-2000

联系电话: 4008-898-798, 021-61725725

联系QQ: 2881505695, 2881505696

邮箱: mlbio_cn@yeah.net

网址: www.mlbio.cn