

Anti-OXSR1 antibody

Cat. No.	ml222820
Package	25 µl/100 µl/200 µl
Storage	-20°C, pH7.4 PBS, 0.05% NaN ₃ , 40% Glycerol

Product overview

Description	Anti-OXSR1 rabbit polyclonal antibody
Applications	ELISA, WB
Immunogen	Fusion protein of human OXSR1
Reactivity	Human, Mouse
Content	0.2 mg/ml
Host species	Rabbit
Ig class	Immunogen-specific rabbit IgG
Purification	Antigen affinity purification

Target information

Symbol	OXSR1
Full name	oxidative stress responsive 1
Synonyms	OSR1
Swissprot	O95747

Target Background

The product of this gene belongs to the Ser/Thr protein kinase family of proteins. It regulates downstream kinases in response to environmental stress, and may play a role in regulating the actin cytoskeleton.

订购热线: 4008-898-798

Applications

Western blotting

Predicted band size: 58 kDa

Positive control: Human breast infiltrative duct tissue, Jurkat and HT-29 cells

Recommended dilution: 500-2000

Gel: 6%SDS-PAGE

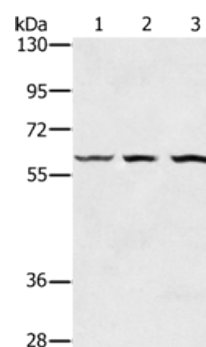
Lysate: 40 µg

Lane 1-3: Human breast infiltrative duct tissue, Jurkat cells,
HT29 cells

Primary antibody: ml222820(OXSR1 Antibody) at dilution
1/300

Secondary antibody: Goat anti rabbit IgG at 1/8000 dilution

Exposure time: 10 seconds



ELISA

Recommended dilution: 2000-5000

联系电话: 4008-898-798, 021-61725725

联系QQ: 2881505695, 2881505696

邮箱: mlbio_cn@yeah.net

网址: www.mlbio.cn