

Anti-PDLIM1 antibody

Cat. No.	ml222854
Package	25 µl/100 µl/200 µl
Storage	-20°C, pH7.4 PBS, 0.05% NaN ₃ , 40% Glycerol

Product overview

Description	Anti-PDLIM1 rabbit polyclonal antibody
Applications	ELISA, WB
Immunogen	Fusion protein of human PDLIM1
Reactivity	Human, Mouse, Rat
Content	0.6 mg/ml
Host species	Rabbit
Ig class	Immunogen-specific rabbit IgG
Purification	Antigen affinity purification

Target information

Symbol	PDLIM1
Full name	PDZ and LIM domain 1
Synonyms	CLIM1; CLP36; CLP-36; hCLIM1; HEL-S-112
Swissprot	O00151

Target Background

This gene encodes a member of the enigma protein family. The protein contains two protein interacting domains, a PDZ domain at the amino terminal end and one to three LIM domains at the carboxyl terminal. It is a cytoplasmic protein associated with the cytoskeleton. The protein may function as an adapter to bring other LIM-interacting proteins to the cytoskeleton. Pseudogenes associated with this gene are located on chromosomes 3, 14 and 17.

订购热线: 4008-898-798

Applications

Western blotting

Predicted band size: 36 kDa

Positive control: Huvec and 293T cells, hepg2 cells and mouse liver tissue

Recommended dilution: 1000-5000

Gel: 8%SDS-PAGE

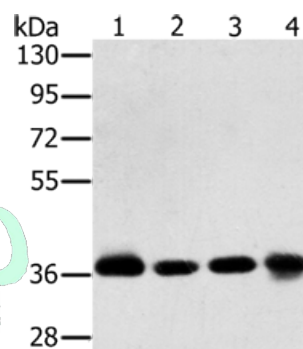
Lysate: 40 µg

Lane 1-4: Huvec cells, 293T cells, hepg2 cells, mouse liver tissue

Primary antibody: ml222854(PDLIM1 Antibody) at dilution 1/600

Secondary antibody: Goat anti rabbit IgG at 1/8000 dilution

Exposure time: 10 seconds



ELISA

Recommended dilution: 2000-10000

联系电话: 4008-898-798, 021-61725725

联系QQ: 2881505695, 2881505696

邮箱: mlbio_cn@yeah.net

网址: www.mlbio.cn