

Anti-ANO1 antibody

Cat. No.	ml260983
Package	25 µl/100 µl/200 µl
Storage	-20°C, pH7.4 PBS, 0.05% NaN ₃ , 40% Glycerol

Product overview

Description	Anti-ANO1 rabbit polyclonal antibody
Applications	ELISA, WB, IHC
Immunogen	Synthetic peptide of human ANO1
Reactivity	Human, Mouse
Content	0.5 mg/ml
Host species	Rabbit
Ig class	Immunogen-specific rabbit IgG
Purification	Antigen affinity purification

Target information

Symbol	ANO1
Full name	anoctamin 1, calcium activated chloride channel

Synonyms DOG1; TAOS2; ORAOV2; TMEM16A

Swissprot Q5XXA6

Target Background

TMEM16A, also known as DOG1, ORAOV2, TAOS2 or ANO1 (anoctamin 1), is a 986 amino acid multi-pass membrane protein that localizes to both the cell membrane and the cytoplasm and belongs to the anoctamin family. Expressed in a variety of tissues with highest expression in skeletal muscle and liver, TMEM16A functions as a calcium-activated chloride channel that is required for normal tracheal development. Human TMEM16A shares 90% sequence identity with its mouse counterpart, suggesting a conserved role between species. TMEM16A is present in breast, pancreatic, gastric, and uterine cancers, as well as in neck, ovarian and parathyroid tumors, suggesting a role for TMEM16A in carcinogenesis. Three isoforms of TMEM16A exist due to alternative splicing events.

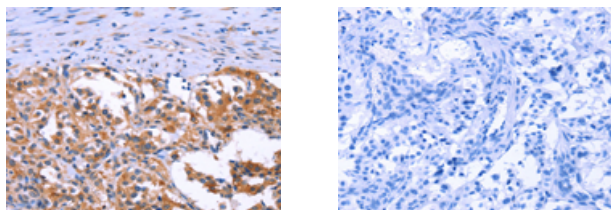
Applications

Immunohistochemistry

Predicted cell location: Cytoplasm

Positive control: Human thyroid cancer

Recommended dilution: 25-100



The image on the left is immunohistochemistry of paraffin-embedded Human thyroid cancer tissue using ml260983(ANO1 Antibody) at dilution 1/40, on the right is treated with synthetic peptide. (Original magnification: $\times 200$)

Western blotting

Predicted band size: 114 kDa

Positive control: Human fetal brain tissue

Recommended dilution: 200-1000

Gel: 6%SDS-PAGE

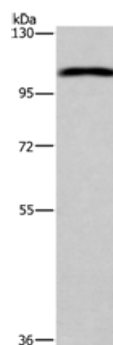
Lysate: 40 μ g

Lane: Human fetal brain tissue

Primary antibody: ml260983(ANO1 Antibody) at dilution 1/250

Secondary antibody: Goat anti rabbit IgG at 1/8000 dilution

Exposure time: 3 minutes



ELISA

Recommended dilution: 1000-2000

联系电话: 4008-898-798, 021-61725725

联系QQ: 2881505695, 2881505696

邮箱: mlbio_cn@yeah.net

网址: www.mlbio.cn