

Anti-SERPINA12 antibody

Cat. No.	ml123129
Package	25 µl/100 µl/200 µl
Storage	-20°C, pH7.4 PBS, 0.05% NaN ₃ , 40% Glycerol

Product overview

Description	Anti-SERPINA12 rabbit polyclonal antibody
Applications	ELISA, IHC
Immunogen	Fusion protein of human SERPINA12
Reactivity	Human
Content	0.4 mg/ml
Host species	Rabbit
Ig class	Immunogen-specific rabbit IgG
Purification	Antigen affinity purification

Target information

Symbol	SERPINA12
Full name	serpin peptidase inhibitor, clade A (alpha-1 antiproteinase, antitrypsin), member 12
Synonyms	OL-64
Swissprot	Q8IW75

Target Background

Adipokine that modulates insulin action by specifically inhibiting its target protease KLK7 in white adipose tissues.

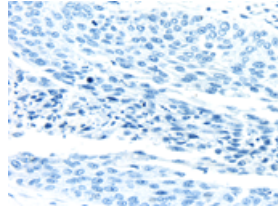
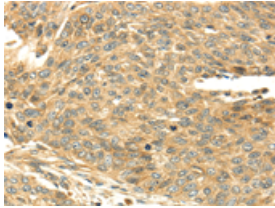
Applications

Immunohistochemistry

Predicted cell location: Secreted

Positive control: Human lung cancer

Recommended dilution: 25-100

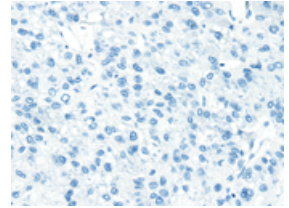
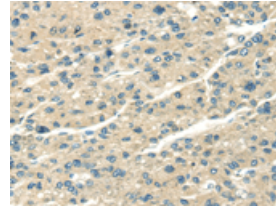


The image on the left is immunohistochemistry of paraffin-embedded Human lung cancer tissue using ml123129(SERPINA12 Antibody) at dilution 1/40, on the right is treated with fusion protein. (Original magnification: $\times 200$)

Predicted cell location: Secreted

Positive control: Human liver cancer

Recommended dilution: 25-100



The image on the left is immunohistochemistry of paraffin-embedded Human liver cancer tissue using ml123129(SERPINA12 Antibody) at dilution 1/40, on the right is treated with fusion protein. (Original magnification: $\times 200$)

ELISA

Recommended dilution: 2000-5000

联系电话: 4008-898-798, 021-61725725

联系QQ: 2881505695, 2881505696

邮箱: mlbio_cn@yeah.net

网址: www.mlbio.cn