

Anti-SHPRH antibody

Cat. No.	ml123146
Package	25 µl/100 µl/200 µl
Storage	-20°C, pH7.4 PBS, 0.05% NaN ₃ , 40% Glycerol

Product overview

Description	Anti-SHPRH rabbit polyclonal antibody
Applications	ELISA, IHC
Immunogen	Fusion protein of human SHPRH
Reactivity	Human, Mouse
Content	0.5 mg/ml
Host species	Rabbit
Ig class	Immunogen-specific rabbit IgG
Purification	Antigen affinity purification

Target information

Symbol	SHPRH
Full name	SNF2 histone linker PHD RING helicase, E3 ubiquitin protein ligase
Synonyms	bA545I5.2
Swissprot	Q149N8

Target Background

SHPRH is a ubiquitously expressed protein that contains motifs characteristics of several DNA repair proteins, transcription factors, and helicases. SHPRH is a functional homolog of *S. cerevisiae* RAD5 (Unk et al., 2006 [PubMed 17108083]).

订购热线: 4008-898-798

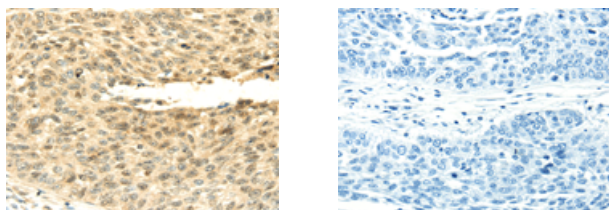
Applications

Immunohistochemistry

Predicted cell location: Cytoplasm and Nucleus

Positive control: Human lung cancer

Recommended dilution: 30-150



The image on the left is immunohistochemistry of paraffin-embedded Human lung cancer tissue using ml123146(SHPRH Antibody) at dilution 1/45, on the right is treated with fusion protein. (Original magnification: ×200)

ELISA

Recommended dilution: 2000-10000

联系电话: 4008-898-798, 021-61725725

联系QQ: 2881505695, 2881505696

邮箱: mlbio_cn@yeah.net

网址: www.mlbio.cn