

Anti-PPP2CA antibody

Cat. No.	ml222906
Package	25 µl/100 µl/200 µl
Storage	-20°C, pH7.4 PBS, 0.05% NaN ₃ , 40% Glycerol

Product overview

Description	Anti-PPP2CA rabbit polyclonal antibody
Applications	ELISA, WB, IHC
Immunogen	Fusion protein of human PPP2CA
Reactivity	Human, Mouse, Rat
Content	0.2 mg/ml
Host species	Rabbit
Ig class	Immunogen-specific rabbit IgG
Purification	Antigen affinity purification

Target information

Symbol	PPP2CA
Full name	protein phosphatase 2, catalytic subunit, alpha isozyme

Synonyms RP-C; PP2Ac; PP2CA; PP2Calpha

Swissprot P67775

Target Background

This gene encodes the phosphatase 2A catalytic subunit. Protein phosphatase 2A is one of the four major Ser/Thr phosphatases, and it is implicated in the negative control of cell growth and division. It consists of a common heteromeric core enzyme, which is composed of a catalytic subunit and a constant regulatory subunit, that associates with a variety of regulatory subunits. This gene encodes an alpha isoform of the catalytic subunit.

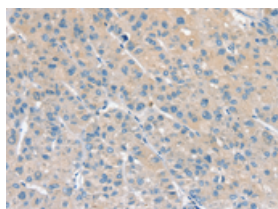
Applications

Immunohistochemistry

Predicted cell location: Cytoplasm

Positive control: Human liver cancer

Recommended dilution: 20-100

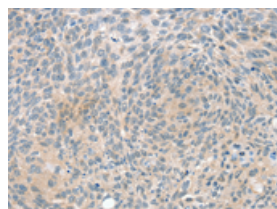


The image on the left is immunohistochemistry of paraffin-embedded Human liver cancer tissue using ml222906(PPP2CA Antibody) at dilution 1/20, on the right is treated with fusion protein. (Original magnification: $\times 200$)

Predicted cell location: Cytoplasm

Positive control: Human esophagus cancer

Recommended dilution: 20-100



The image on the left is immunohistochemistry of paraffin-embedded Human esophagus cancer tissue using ml222906(PPP2CA Antibody) at dilution 1/20, on the right is treated with fusion protein. (Original magnification: $\times 200$)

Western blotting

Predicted band size: 36 kDa

Positive control: Mouse brain tissue

Recommended dilution: 200-1000

Gel: 10%SDS-PAGE

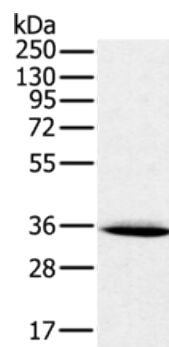
Lysate: 40 μ g

Lane: Mouse brain tissue

Primary antibody: ml222906(PPP2CA Antibody) at dilution 1/300

Secondary antibody: Goat anti rabbit IgG at 1/8000 dilution

Exposure time: 1 minute



ELISA

Recommended dilution: 1000-2000

联系电话: 4008-898-798, 021-61725725

联系QQ: 2881505695, 2881505696

邮箱: mlbio_cn@yeah.net

网址: www.mlbio.cn