

Anti-PGK2 antibody

Cat. No.	ml221803
Package	25 µl/100 µl/200 µl
Storage	-20°C, pH7.4 PBS, 0.05% NaN ₃ , 40% Glycerol

Product overview

Description	Anti-PGK2 rabbit polyclonal antibody
Applications	ELISA, WB, IHC
Immunogen	Fusion protein of human PGK2
Reactivity	Human, Mouse, Rat
Content	0.4 mg/ml
Host species	Rabbit
Ig class	Immunogen-specific rabbit IgG
Purification	Antigen affinity purification

Target information

Symbol	PGK2
Full name	phosphoglycerate kinase 2

Synonyms PGKB; PGKPS; dJ417L20.2

Swissprot P07205

Target Background

This gene is intronless, arose via retrotransposition of the phosphoglycerate kinase 1 gene, and is expressed specifically in the testis. Initially assumed to be a pseudogene, the encoded protein is actually a functional phosphoglycerate kinase that catalyzes the reversible conversion of 1,3-bisphosphoglycerate to 3-phosphoglycerate, during the Embden-Meyerhof-Parnas pathway of glycolysis, in the later stages of spermatogenesis.

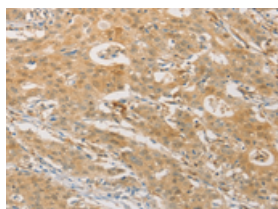
Applications

Immunohistochemistry

Predicted cell location: Cytoplasm

Positive control: Human gasrtic cancer

Recommended dilution: 50-200

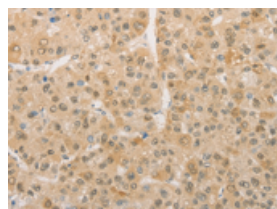


The image on the left is immunohistochemistry of paraffin-embedded Human gasrtic cancer tissue using ml221803(PGK2 Antibody) at dilution 1/50, on the right is treated with fusion protein. (Original magnification: ×200)

Predicted cell location: Cytoplasm

Positive control: Human liver cancer

Recommended dilution: 50-200



The image on the left is immunohistochemistry of paraffin-embedded Human liver cancer tissue using ml221803(PGK2 Antibody) at dilution 1/50, on the right is treated with fusion protein. (Original magnification: ×200)

Western blotting

Predicted band size:45 kDa

Positive control:HepG2 cells and human fetal placenta tissue, 293T cells and human testis tissue, NIH/3T3 cells

Recommended dilution: 1000-5000

Gel: 10%SDS-PAGE

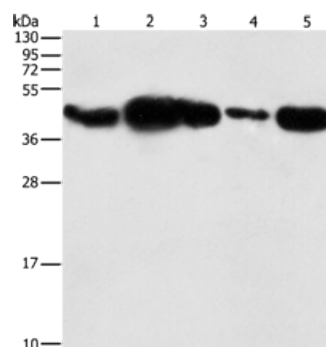
Lysate: 40 µg

Lane 1-5: HepG2 cells, human fetal placenta tissue, 293T cells, human testis tissue,
NIH/3T3 cells

Primary antibody: ml221803(PGK2 Antibody) at dilution 1/600

Secondary antibody: Goat anti rabbit IgG at 1/8000 dilution

Exposure time: 5 seconds



ELISA

Recommended dilution: 2000-10000

联系电话: 4008-898-798, 021-61725725

联系QQ: 2881505695, 2881505696

邮箱: mlbio_cn@yeah.net

网址: www.mlbio.cn