

Anti-MAP2K1 antibody

Cat. No.	ml261061
Package	25 µl/100 µl/200 µl
Storage	-20°C, pH7.4 PBS, 0.05% NaN ₃ , 40% Glycerol

Product overview

Description	Anti-MAP2K1 rabbit polyclonal antibody
Applications	ELISA, WB, IHC
Immunogen	Synthetic peptide of human MAP2K1
Reactivity	Human, Mouse, Rat
Content	0.2 mg/ml
Host species	Rabbit
Ig class	Immunogen-specific rabbit IgG
Purification	Antigen affinity purification

Target information

Symbol	MAP2K1
Full name	mitogen-activated protein kinase kinase 1

Synonyms MEK1, MKK1, MAPKK1, PRKMK1

Swissprot Q02750

Target Background

The protein encoded by this gene is a member of the dual specificity protein kinase family, which acts as a mitogen-activated protein (MAP) kinase kinase. MAP kinases, also known as extracellular signal-regulated kinases (ERKs), act as an integration point for multiple biochemical signals. This protein kinase lies upstream of MAP kinases and stimulates the enzymatic activity of MAP kinases upon wide variety of extra- and intracellular signals. As an essential component of MAP kinase signal transduction pathway, this kinase is involved in many cellular processes such as proliferation, differentiation, transcription regulation and development.

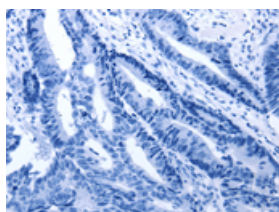
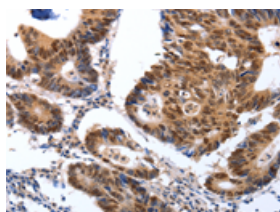
Applications

Immunohistochemistry

Predicted cell location: Cytoplasm, Nucleus

Positive control: Human colon cancer

Recommended dilution: 25-100

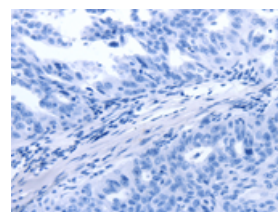
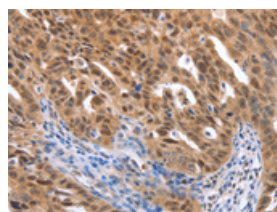


The image on the left is immunohistochemistry of paraffin-embedded Human colon cancer tissue using ml261061(MAP2K1 Antibody) at dilution 1/25, on the right is treated with synthetic peptide. (Original magnification: $\times 200$)

Predicted cell location: Cytoplasm, Nucleus

Positive control: Human ovarian cancer

Recommended dilution: 25-100



The image on the left is immunohistochemistry of paraffin-embedded Human ovarian cancer tissue using ml261061(MAP2K1 Antibody) at dilution 1/25, on the right is treated with synthetic peptide. (Original magnification: $\times 200$)

Western blotting

Predicted band size: 43 kDa

Positive control: Jurkat, hela and K562 cells

Recommended dilution: 500-2000

Gel: 10%SDS-PAGE

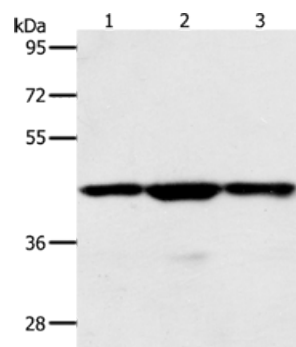
Lysate: 40 µg

Lane 1-3: Jurkat cells, hela cells, K562 cells

Primary antibody: ml261061(MAP2K1 Antibody) at dilution 1/400

Secondary antibody: Goat anti rabbit IgG at 1/8000 dilution

Exposure time: 20 seconds



ELISA

Recommended dilution: 2000-5000

联系电话: 4008-898-798, 021-61725725

联系QQ: 2881505695, 2881505696

邮箱: mlbio_cn@yeah.net

网址: www.mlbio.cn