

Anti-LTF antibody

Cat. No.	ml221815
Package	25 µl/100 µl/200 µl
Storage	-20°C, pH7.4 PBS, 0.05% NaN ₃ , 40% Glycerol

Product overview

Description	Anti-LTF rabbit polyclonal antibody
Applications	ELISA, WB, IHC
Immunogen	Fusion protein of human LTF
Reactivity	Human
Content	0.2 mg/ml
Host species	Rabbit
Ig class	Immunogen-specific rabbit IgG
Purification	Antigen affinity purification

Target information

Symbol	LTF
Full name	lactotransferrin

Synonyms LF; HLF2; GIG12

Swissprot P02788

Target Background

This gene is a member of the transferrin family of genes and its protein product is found in the secondary granules of neutrophils. The protein is a major iron-binding protein in milk and body secretions with an antimicrobial activity, making it an important component of the non-specific immune system. The protein demonstrates a broad spectrum of properties, including regulation of iron homeostasis, host defense against a broad range of microbial infections, anti-inflammatory activity, regulation of cellular growth and differentiation and protection against cancer development and metastasis. Alternatively spliced transcript variants encoding different isoforms have been found for this gene.

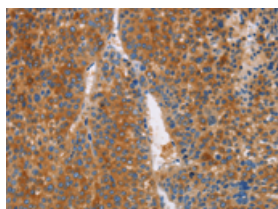
Applications

Immunohistochemistry

Predicted cell location: Cytoplasm

Positive control: Human liver cancer

Recommended dilution: 50-200

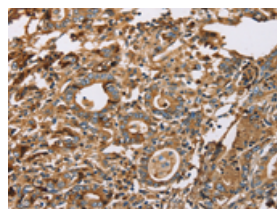


The image on the left is immunohistochemistry of paraffin-embedded Human liver cancer tissue using ml221815(LTF Antibody) at dilution 1/50, on the right is treated with fusion protein. (Original magnification: $\times 200$)

Predicted cell location: Cytoplasm

Positive control: Human gastric cancer

Recommended dilution: 50-200



The image on the left is immunohistochemistry of paraffin-embedded Human gastric cancer tissue using ml221815(LTF Antibody) at dilution 1/50, on the right is treated with fusion protein. (Original magnification: $\times 200$)

Western blotting

Predicted band size: 78 kDa

Positive control: Human prostate tissue

Recommended dilution: 200-1000

Gel: 6%SDS-PAGE

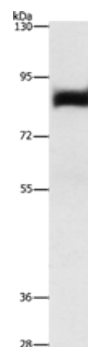
Lysate: 40 µg

Lane: Human prostate tissue

Primary antibody: ml221815(LTF Antibody) at dilution 1/296

Secondary antibody: Goat anti rabbit IgG at 1/8000 dilution

Exposure time: 5 seconds



ELISA

Recommended dilution: 1000-5000

联系电话: 4008-898-798, 021-61725725

联系QQ: 2881505695, 2881505696

邮箱: mlbio_cn@yeah.net

网址: www.mlbio.cn