

Anti-PTRH2 antibody

Cat. No.	ml222953
Package	25 µl/100 µl/200 µl
Storage	-20°C, pH7.4 PBS, 0.05% NaN ₃ , 40% Glycerol

Product overview

Description	Anti-PTRH2 rabbit polyclonal antibody
Applications	ELISA, WB, IHC
Immunogen	Fusion protein of human PTRH2
Reactivity	Human, Mouse
Content	0.1 mg/ml
Host species	Rabbit
Ig class	Immunogen-specific rabbit IgG
Purification	Antigen affinity purification

Target information

Symbol	PTRH2
Full name	peptidyl-tRNA hydrolase 2

Synonyms BIT1; PTH2; CFAP37; CGI-147

Swissprot Q9Y3E5

Target Background

PTRH2 (peptidyl-tRNA hydrolase 2), also known as BIT1 (Bcl-2 inhibitor of transcription 1), is a 179 amino acid mitochondrial protein. During apoptosis, PTRH2 is released from the mitochondria to the cytoplasm. Once in the cytoplasm, PTRH2 regulates the function of two transcriptional regulators, TLE5 and TLE1, thereby promoting caspase-independent cell death. It is also believed that the natural substrate for PTRH2 may be peptidyl-tRNAs, which leave the ribosomes during protein synthesis.

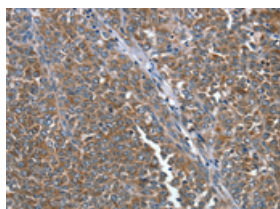
Applications

Immunohistochemistry

Predicted cell location: Cytoplasm

Positive control: Human ovarian cancer

Recommended dilution: 10-50

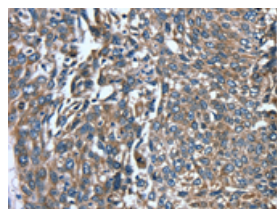


The image on the left is immunohistochemistry of paraffin-embedded Human ovarian cancer tissue using ml222953(PTRH2 Antibody) at dilution 1/20, on the right is treated with fusion protein. (Original magnification: $\times 200$)

Predicted cell location: Cytoplasm

Positive control: Human lung cancer

Recommended dilution: 10-50



The image on the left is immunohistochemistry of paraffin-embedded Human lung cancer tissue using ml222953(PTRH2 Antibody) at dilution 1/20, on the right is treated with fusion protein. (Original magnification: $\times 200$)

Western blotting

Predicted band size: 19 kDa

Positive control: K562, hepg2, 231, Jurkat and Raji cells

Recommended dilution: 500-2000

Gel: 12%SDS-PAGE

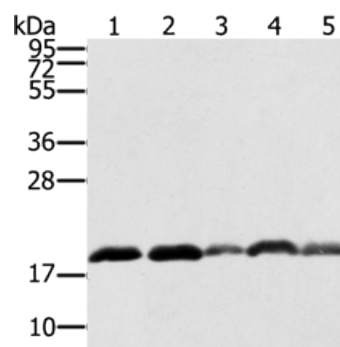
Lysate: 40 µg

Lane 1-5: K562 cells, hepg2 cells, 231 cells, Jurkat cells, Raji cells

Primary antibody: ml222953(PTRH2 Antibody) at dilution 1/250

Secondary antibody: Goat anti rabbit IgG at 1/8000 dilution

Exposure time: 20 seconds



ELISA

Recommended dilution: 2000-5000

联系电话: 4008-898-798, 021-61725725

联系QQ: 2881505695, 2881505696

邮箱: mlbio_cn@yeah.net

网址: www.mlbio.cn