

Anti-PYGM antibody

Cat. No.	ml222955
Package	25 µl/100 µl/200 µl
Storage	-20°C, pH7.4 PBS, 0.05% NaN ₃ , 40% Glycerol

Product overview

Description	Anti-PYGM rabbit polyclonal antibody
Applications	ELISA, WB, IHC
Immunogen	Fusion protein of human PYGM
Reactivity	Human, Mouse, Rat
Content	0.4 mg/ml
Host species	Rabbit
Ig class	Immunogen-specific rabbit IgG
Purification	Antigen affinity purification

Target information

Symbol	PYGM
Full name	phosphorylase, glycogen, muscle

Synonyms

Swissprot P11217

Target Background

This gene encodes a muscle enzyme involved in glycogenolysis. Highly similar enzymes encoded by different genes are found in liver and brain. Mutations in this gene are associated with McArdle disease (myophosphorylase deficiency), a glycogen storage disease of muscle. Alternative splicing results in multiple transcript variants.

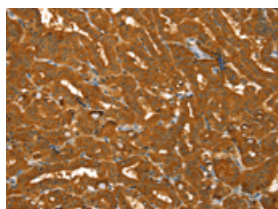
Applications

Immunohistochemistry

Predicted cell location: Cytoplasm

Positive control: Human thyroid cancer

Recommended dilution: 30-150

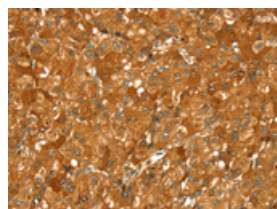


The image on the left is immunohistochemistry of paraffin-embedded Human thyroid cancer tissue using ml222955(PYGM Antibody) at dilution 1/30, on the right is treated with fusion protein. (Original magnification: ×200)

Predicted cell location: Cytoplasm

Positive control: Human liver cancer

Recommended dilution: 30-150



The image on the left is immunohistochemistry of paraffin-embedded Human liver cancer tissue using ml222955(PYGM Antibody) at dilution 1/30, on the right is treated with fusion protein. (Original magnification: ×200)

Western blotting

Predicted band size: 97 kDa

Positive control: Mouse heart tissue

Recommended dilution: 500-2000

Gel: 8%SDS-PAGE

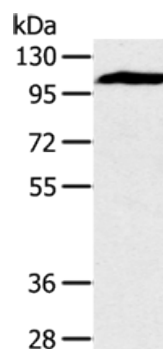
Lysate: 40 μ g

Lane: Mouse heart tissue

Primary antibody: ml222955(PYGM Antibody) at dilution 1/400

Secondary antibody: Goat anti rabbit IgG at 1/8000 dilution

Exposure time: 40 seconds



ELISA

Recommended dilution: 2000-5000

联系电话: 4008-898-798, 021-61725725

联系QQ: 2881505695, 2881505696

邮箱: mlbio_cn@yeah.net

网址: www.mlbio.cn