

Anti-AK2 antibody

Cat. No.	ml221850
Package	25 µl/100 µl/200 µl
Storage	-20°C, pH7.4 PBS, 0.05% NaN ₃ , 40% Glycerol

Product overview

Description	Anti-AK2 rabbit polyclonal antibody
Applications	ELISA, WB, IHC
Immunogen	Fusion protein of human AK2
Reactivity	Human, Mouse, Rat
Content	0.2 mg/ml
Host species	Rabbit
Ig class	Immunogen-specific rabbit IgG
Purification	Antigen affinity purification

Target information

Symbol	AK2
Full name	adenylate kinase 2

Synonyms ADK2; AK 2

Swissprot P54819

Target Background

Adenylate kinases are involved in regulating the adenine nucleotide composition within a cell by catalyzing the reversible transfer of phosphate groups among adenine nucleotides. Three isozymes of adenylate kinase, namely 1, 2, and 3, have been identified in vertebrates; this gene encodes isozyme 2. Expression of these isozymes is tissue-specific and developmentally regulated. Isozyme 2 is localized in the mitochondrial intermembrane space and may play a role in apoptosis. Mutations in this gene are the cause of reticular dysgenesis. Alternate splicing results in multiple transcript variants. Pseudogenes of this gene are found on chromosomes 1 and 2.

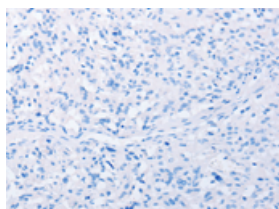
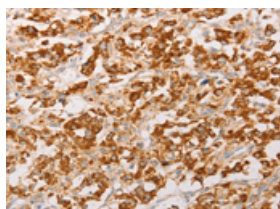
Applications

Immunohistochemistry

Predicted cell location: Cytoplasm

Positive control: Human thyroid cancer

Recommended dilution: 50-200

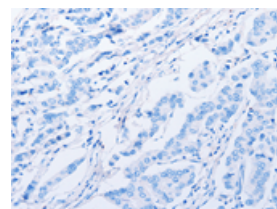
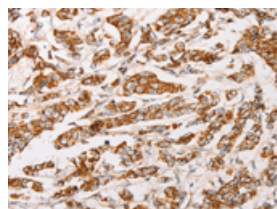


The image on the left is immunohistochemistry of paraffin-embedded Human thyroid cancer tissue using ml221850(AK2 Antibody) at dilution 1/30, on the right is treated with fusion protein. (Original magnification: $\times 200$)

Predicted cell location: Cytoplasm

Positive control: Human breast cancer

Recommended dilution: 50-200



The image on the left is immunohistochemistry of paraffin-embedded Human breast cancer tissue using ml221850(AK2 Antibody) at dilution 1/30, on the right is treated with fusion protein. (Original magnification: $\times 200$)

Western blotting

Predicted band size: 26 kDa

Positive control: Human placenta tissue and A549 cells, mouse brain tissue and hepG2 cells, Raji cells and human fetal liver tissue, hela cells

Recommended dilution: 500-2000

Gel: 10%SDS-PAGE

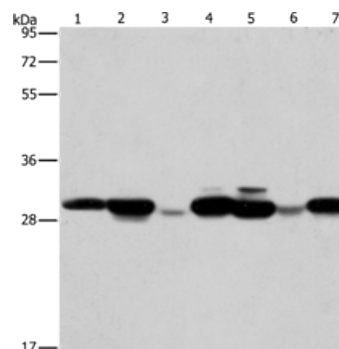
Lysate: 40 µg

Lane 1-7: Human placenta tissue, A549 cells, mouse brain tissue, hepG2 cells, Raji cells, human fetal liver tissue, hela cells

Primary antibody: ml221850(AK2 Antibody) at dilution 1/250

Secondary antibody: Goat anti rabbit IgG at 1/8000 dilution

Exposure time: 20 seconds



ELISA

Recommended dilution: 2000-5000

联系电话: 4008-898-798, 021-61725725

联系QQ: 2881505695, 2881505696

邮箱: mlbio_cn@yeah.net

网址: www.mlbio.cn