

Anti-SLC5A1 antibody

Cat. No.	ml261119
Package	25 µl/100 µl/200 µl
Storage	-20°C, pH7.4 PBS, 0.05% NaN ₃ , 40% Glycerol

Product overview

Description	Anti-SLC5A1 rabbit polyclonal antibody
Applications	ELISA, WB, IHC
Immunogen	Synthetic peptide of human SLC5A1
Reactivity	Human, Mouse, Rat
Content	2.4 mg/ml
Host species	Rabbit
Ig class	Immunogen-specific rabbit IgG
Purification	Antigen affinity purification

Target information

Symbol	SLC5A1
Full name	solute carrier family 5 member 1

Synonyms NAGT; SGLT1; D22S675

Swissprot P13866

Target Background

This gene encodes a member of the sodium-dependent glucose transporter (SGLT) family. The encoded integral membrane protein is the primary mediator of dietary glucose and galactose uptake from the intestinal lumen. Mutations in this gene have been associated with glucose-galactose malabsorption. Multiple transcript variants encoding different isoforms have been found for this gene.

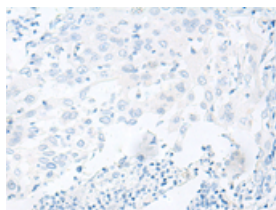
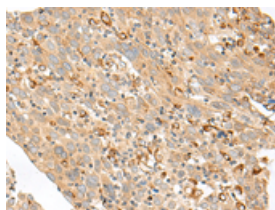
Applications

Immunohistochemistry

Predicted cell location: Cell membrane

Positive control: Human cervical cancer

Recommended dilution: 50-300

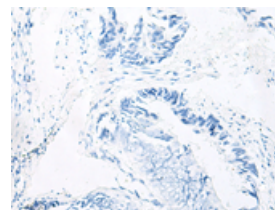
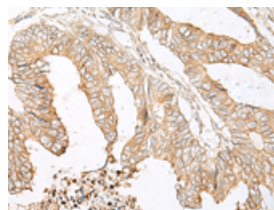


The image on the left is immunohistochemistry of paraffin-embedded Human cervical cancer tissue using ml261119(SLC5A1 Antibody) at dilution 1/80, on the right is treated with synthetic peptide. (Original magnification: ×200)

Predicted cell location: Cell membrane

Positive control: Human colorectal cancer

Recommended dilution: 50-300



The image on the left is immunohistochemistry of paraffin-embedded Human colorectal cancer tissue using ml261119(SLC5A1 Antibody) at dilution 1/80, on the right is treated with synthetic peptide. (Original magnification: ×200)

Western blotting

Predicted band size: 73 kDa

Positive control: Mouse eye tissue lysate

Recommended dilution: 500-2000

Gel: 8%SDS-PAGE

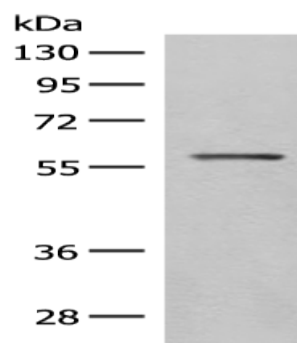
Lysate: 40 µg

Lane: Mouse eye tissue lysate

Primary antibody: ml261119(SLC5A1 Antibody) at dilution 1/500

Secondary antibody: Goat anti rabbit IgG at 1/8000 dilution

Exposure time: 30 seconds



ELISA

Recommended dilution: 5000-10000

联系电话: 4008-898-798, 021-61725725

联系QQ: 2881505695, 2881505696

邮箱: mlbio_cn@yeah.net

网址: www.mlbio.cn