

## Anti-STK33 antibody

<b>Cat. No.</b>	ml123246
<b>Package</b>	25 µl/100 µl/200 µl
<b>Storage</b>	-20°C, pH7.4 PBS, 0.05% NaN <sub>3</sub> , 40% Glycerol

### Product overview

<b>Description</b>	Anti-STK33 rabbit polyclonal antibody
<b>Applications</b>	ELISA, IHC
<b>Immunogen</b>	Fusion protein of human STK33
<b>Reactivity</b>	Human
<b>Content</b>	0.6 mg/ml
<b>Host species</b>	Rabbit
<b>Ig class</b>	Immunogen-specific rabbit IgG
<b>Purification</b>	Antigen affinity purification

### Target information

<b>Symbol</b>	STK33
<b>Full name</b>	serine/threonine kinase 33
<b>Synonyms</b>	
<b>Swissprot</b>	Q9BYT3

### Target Background

STK33 (serine/threonine kinase 33) is a 514 amino acid protein that belongs to the CaMK (calcium/calmodulin dependent kinase) subfamily of structurally related serine/threonine kinases. Widely expressed at low levels with predominant expression in testis, lung, retina and fetal organs such as brain, heart and spinal cord, STK33 contains one protein kinase domain and functions as a Ser/Thr protein kinase with a possible role in spermatogenesis. The gene encoding STK33 lies within a region on chromosome 11 that has been associated with a variety of defects, including Long QT syndrome, T-cell leukemia, Beckwith-Wiedemann syndrome, Usher syndrome 1C and various other malignancies.

订购热线: 4008-898-798

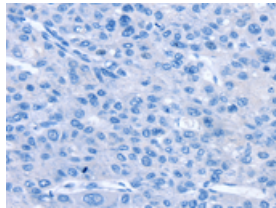
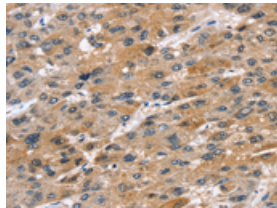
## Applications

### Immunohistochemistry

Predicted cell location: Cytoplasm

Positive control: Human liver cancer

Recommended dilution: 25-100

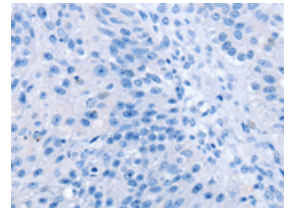
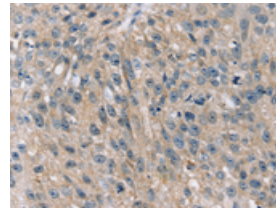


The image on the left is immunohistochemistry of paraffin-embedded Human liver cancer tissue using ml123246(STK33 Antibody) at dilution 1/45, on the right is treated with fusion protein. (Original magnification:  $\times 200$ )

Predicted cell location: Cytoplasm

Positive control: Human breast cancer

Recommended dilution: 25-100



The image on the left is immunohistochemistry of paraffin-embedded Human breast cancer tissue using ml123246(STK33 Antibody) at dilution 1/45, on the right is treated with fusion protein. (Original magnification:  $\times 200$ )

### ELISA

Recommended dilution: 2000-5000

联系电话: 4008-898-798, 021-61725725

联系QQ: 2881505695, 2881505696

邮箱: [mlbio\\_cn@yeah.net](mailto:mlbio_cn@yeah.net)

网址: [www.mlbio.cn](http://www.mlbio.cn)