

## Anti-SLC33A1 antibody

<b>Cat. No.</b>	ml261129
<b>Package</b>	25 µl/100 µl/200 µl
<b>Storage</b>	-20°C, pH7.4 PBS, 0.05% NaN <sub>3</sub> , 40% Glycerol

### Product overview

<b>Description</b>	Anti-SLC33A1 rabbit polyclonal antibody
<b>Applications</b>	ELISA, WB
<b>Immunogen</b>	Synthetic peptide of human SLC33A1
<b>Reactivity</b>	Human, Mouse, Rat
<b>Content</b>	0.5 mg/ml
<b>Host species</b>	Rabbit
<b>Ig class</b>	Immunogen-specific rabbit IgG
<b>Purification</b>	Antigen affinity purification

### Target information

<b>Symbol</b>	SLC33A1
<b>Full name</b>	solute carrier family 33 (acetyl-CoA transporter), member 1
<b>Synonyms</b>	AT1, AT-1, ACATN, SPG42, CCHLND
<b>Swissprot</b>	O00400

### Target Background

The protein encoded by this gene is required for the formation of O-acetylated (Ac) gangliosides. The encoded protein is predicted to contain 6 to 10 transmembrane domains, and a leucine zipper motif in transmembrane domain III. Defects in this gene have been reported to cause spastic paraplegia autosomal dominant type 42 (SPG42) in one Chinese family, but not in similar patients of European descent. Two transcript variants encoding the same protein have been found for this gene.

订购热线: 4008-898-798

#### Applications

##### Western blotting

Predicted band size: 61 kDa

Positive control: Mouse liver tissue

Recommended dilution: 1000-5000

Gel: 10%SDS-PAGE

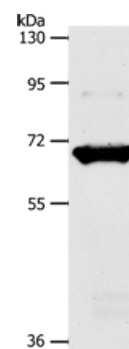
Lysate: 40 µg

Lane: Mouse liver tissue

Primary antibody: ml261129(SLC33A1 Antibody) at dilution 1/1100

Secondary antibody: Goat anti rabbit IgG at 1/8000 dilution

Exposure time: 1 minute



##### ELISA

Recommended dilution: 2000-10000

联系电话: 4008-898-798, 021-61725725

联系QQ: 2881505695, 2881505696

邮箱: [mlbio\\_cn@yeah.net](mailto:mlbio_cn@yeah.net)

网址: [www.mlbio.cn](http://www.mlbio.cn)