

Anti-RBBP5 antibody

Cat. No.	ml222991
Package	25 µl/100 µl/200 µl
Storage	-20°C, pH7.4 PBS, 0.05% NaN ₃ , 40% Glycerol

Product overview

Description	Anti-RBBP5 rabbit polyclonal antibody
Applications	ELISA, WB
Immunogen	Fusion protein of human RBBP5
Reactivity	Human, Mouse
Content	0.3 mg/ml
Host species	Rabbit
Ig class	Immunogen-specific rabbit IgG
Purification	Antigen affinity purification

Target information

Symbol	RBBP5
Full name	retinoblastoma binding protein 5
Synonyms	RBQ3; SWD1
Swissprot	Q15291

Target Background

This gene encodes a ubiquitously expressed nuclear protein which belongs to a highly conserved subfamily of WD-repeat proteins. The encoded protein binds directly to retinoblastoma protein, which regulates cell proliferation. It interacts preferentially with the underphosphorylated retinoblastoma protein via the E1A-binding pocket B. Three alternatively spliced transcript variants that encode different protein isoforms have been described for this gene.

订购热线: 4008-898-798

Applications

Western blotting

Predicted band size: 59 kDa

Positive control: HT-29 and hela cells

Recommended dilution: 200-1000

Gel: 8%SDS-PAGE

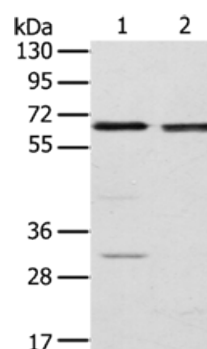
Lysate: 60 µg

Lane 1-2: HT29 cells, hela cells

Primary antibody: ml222991(RBBP5 Antibody) at dilution 1/200

Secondary antibody: Goat anti rabbit IgG at 1/8000 dilution

Exposure time: 10 seconds



ELISA

Recommended dilution: 1000-2000

联系电话: 4008-898-798, 021-61725725

联系QQ: 2881505695, 2881505696

邮箱: mlbio_cn@yeah.net

网址: www.mlbio.cn