

Anti-SYTL5 antibody

Cat. No.	ml123264
Package	25 µl/100 µl/200 µl
Storage	-20°C, pH7.4 PBS, 0.05% NaN ₃ , 40% Glycerol

Product overview

Description	Anti-SYTL5 rabbit polyclonal antibody
Applications	ELISA, IHC
Immunogen	Fusion protein of human SYTL5
Reactivity	Human, Mouse, Rat
Content	0.7 mg/ml
Host species	Rabbit
Ig class	Immunogen-specific rabbit IgG
Purification	Antigen affinity purification

Target information

Symbol	SYTL5
Full name	synaptotagmin-like 5
Synonyms	slp5
Swissprot	Q8TDW5

Target Background

The protein encoded by this gene belongs to the synaptotagmin-like (Slp) protein family, which contains a unique homology domain at the N-terminus, referred to as the Slp homology domain (SHD). The SHD functions as a binding site for Rab27A, which plays a role in protein transport. Expression of this gene is restricted to placenta and liver, suggesting that it might be involved in Rab27A-dependent membrane trafficking in specific tissues.

订购热线: 4008-898-798

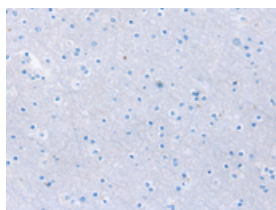
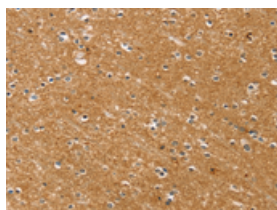
Applications

Immunohistochemistry

Predicted cell location: Cytoplasm

Positive control: Human brain

Recommended dilution: 25-100

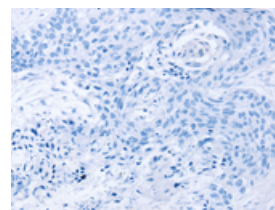
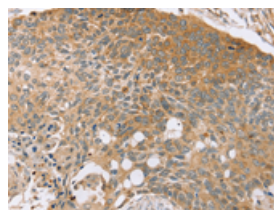


The image on the left is immunohistochemistry of paraffin-embedded Human brain tissue using ml123264(SYTL5 Antibody) at dilution 1/50, on the right is treated with fusion protein. (Original magnification: $\times 200$)

Predicted cell location: Cytoplasm

Positive control: Human esophagus cancer

Recommended dilution: 25-100



The image on the left is immunohistochemistry of paraffin-embedded Human esophagus cancer tissue using ml123264(SYTL5 Antibody) at dilution 1/50, on the right is treated with fusion protein. (Original magnification: $\times 200$)

ELISA

Recommended dilution: 2000-5000

联系电话: 4008-898-798, 021-61725725

联系QQ: 2881505695, 2881505696

邮箱: mlbio_cn@yeah.net

网址: www.mlbio.cn