

Anti-TIGAR antibody

Cat. No.	ml261180
Package	25 µl/100 µl/200 µl
Storage	-20°C, pH7.4 PBS, 0.05% NaN ₃ , 40% Glycerol

Product overview

Description	Anti-TIGAR rabbit polyclonal antibody
Applications	ELISA, WB, IHC
Immunogen	Synthetic peptide of human TIGAR
Reactivity	Human
Content	0.4 mg/ml
Host species	Rabbit
Ig class	Immunogen-specific rabbit IgG
Purification	Antigen affinity purification

Target information

Symbol	TIGAR
Full name	TP53 induced glycolysis regulatory phosphatase

Synonyms FR2BP; C12orf5

Swissprot Q9NQ88

Target Background

This gene is regulated as part of the p53 tumor suppressor pathway and encodes a protein with sequence similarity to the bisphosphate domain of the glycolytic enzyme that degrades fructose-2,6-bisphosphate. The protein functions by blocking glycolysis and directing the pathway into the pentose phosphate shunt. Expression of this protein also protects cells from DNA damaging reactive oxygen species and provides some protection from DNA damage-induced apoptosis.

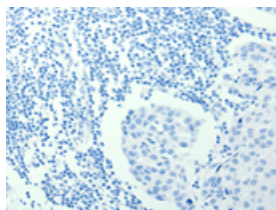
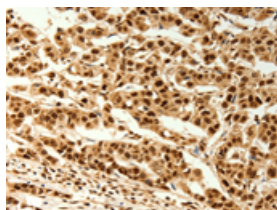
Applications

Immunohistochemistry

Predicted cell location: Nucleus,Cytoplasm

Positive control: Human cervical cancer

Recommended dilution: 100-300

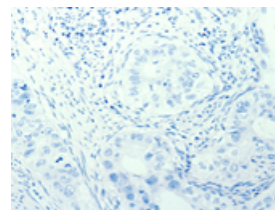
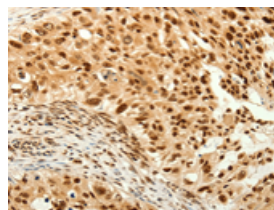


The image on the left is immunohistochemistry of paraffin-embedded Human cervical cancer tissue using ml261180(TIGAR Antibody) at dilution 1/80, on the right is treated with synthetic peptide. (Original magnification: ×200)

Predicted cell location: Nucleus,Cytoplasm

Positive control: Human breast cancer

Recommended dilution: 100-300



The image on the left is immunohistochemistry of paraffin-embedded Human breast cancer tissue using ml261180(TIGAR Antibody) at dilution 1/80, on the right is treated with synthetic peptide. (Original magnification: ×200)

Western blotting

Predicted band size:30 kDa

Positive control:Human normal liver tissue

Recommended dilution: 200-1000

Gel: 8%SDS-PAGE

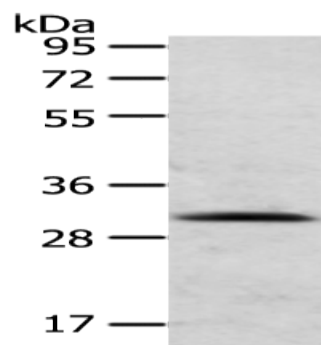
Lysate: 40 μ g

Lane: Human normal liver tissue

Primary antibody: ml261180(TIGAR Antibody) at dilution 1/200

Secondary antibody: Goat anti rabbit IgG at 1/8000 dilution

Exposure time: 10 seconds



ELISA

Recommended dilution: 1000-2000

联系电话: 4008-898-798, 021-61725725

联系QQ: 2881505695, 2881505696

邮箱: mlbio_cn@yeah.net

网址: www.mlbio.cn