

Anti-ASAH1 antibody

Cat. No.	ml221909
Package	25 µl/100 µl/200 µl
Storage	-20°C, pH7.4 PBS, 0.05% NaN ₃ , 40% Glycerol

Product overview

Description	Anti-ASAH1 rabbit polyclonal antibody
Applications	ELISA, WB, IHC
Immunogen	Fusion protein of human ASAH1
Reactivity	Human, Mouse, Rat
Content	0.3 mg/ml
Host species	Rabbit
Ig class	Immunogen-specific rabbit IgG
Purification	Antigen affinity purification

Target information

Symbol	ASAH1
Full name	N-acylsphingosine amidohydrolase (acid ceramidase) 1

Synonyms AC; PHP; ASAH; PHP32; ACDase; SMAPME

Swissprot Q13510

Target Background

This gene encodes a heterodimeric protein consisting of a nonglycosylated alpha subunit and a glycosylated beta subunit that is cleaved to the mature enzyme posttranslationally. The encoded protein catalyzes the synthesis and degradation of ceramide into sphingosine and fatty acid. Mutations in this gene have been associated with a lysosomal storage disorder known as Farber disease. Multiple transcript variants encoding several distinct isoforms have been identified for this gene.

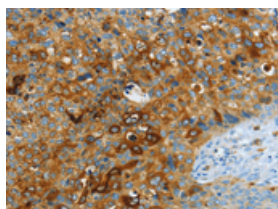
Applications

Immunohistochemistry

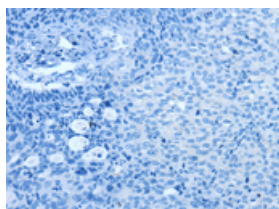
Predicted cell location: Cytoplasm

Positive control: Human cervical cancer

Recommended dilution: 50-200



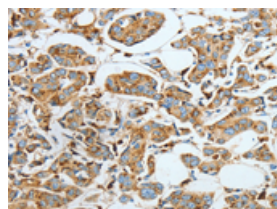
The image on the left is immunohistochemistry of paraffin-embedded Human cervical cancer tissue using ml221909(ASAH1 Antibody) at dilution 1/40, on the right is treated with fusion protein. (Original magnification: ×200)



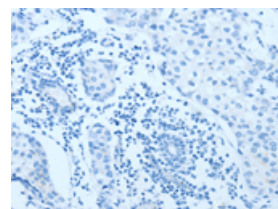
Predicted cell location: Cytoplasm

Positive control: Human breast cancer

Recommended dilution: 50-200



The image on the left is immunohistochemistry of paraffin-embedded Human breast cancer tissue using ml221909(ASAH1 Antibody) at dilution 1/40, on the right is treated with fusion protein. (Original magnification: ×200)



Western blotting

Predicted band size: 45 kDa

Positive control: Human colon cancer tissue, human fetal brain and fetal lung tissue

Recommended dilution: 500-2000

Gel: 8%SDS-PAGE

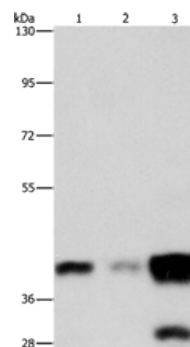
Lysate: 40 µg

Lane 1-3: Human colon cancer tissue, human fetal brain tissue, Human fetal lung tissue

Primary antibody: ml221909(ASAH1 Antibody) at dilution 1/800

Secondary antibody: Goat anti rabbit IgG at 1/8000 dilution

Exposure time: 30 seconds



ELISA

Recommended dilution: 1000-5000

联系电话: 4008-898-798, 021-61725725

联系QQ: 2881505695, 2881505696

邮箱: mlbio_cn@yeah.net

网址: www.mlbio.cn