

Anti-AIFM3 antibody

Cat. No.	ml221934
Package	25 µl/100 µl/200 µl
Storage	-20°C, pH7.4 PBS, 0.05% NaN ₃ , 40% Glycerol

Product overview

Description	Anti-AIFM3 rabbit polyclonal antibody
Applications	ELISA, WB, IHC
Immunogen	Fusion protein of human AIFM3
Reactivity	Human, Mouse
Content	0.6 mg/ml
Host species	Rabbit
Ig class	Immunogen-specific rabbit IgG
Purification	Antigen affinity purification

Target information

Symbol	AIFM3
Full name	apoptosis-inducing factor, mitochondrion-associated, 3

Synonyms	AIFL
Swissprot	Q96NN9

Target Background

AIFL (apoptosis-inducing factor-like), also known as AIFM3 (apoptosis-inducing factor, mitochondrion-associated, 3), is a 605 amino acid protein that localizes to the mitochondrion and contains one rieske domain. Expressed ubiquitously in tissues including liver, thymus, ovary, bone marrow and cerebral cortex, AIFL functions to induce apoptosis, specifically through a caspase-dependent pathway, and may also play a role in the modulation of mitochondrial membrane potential. Multiple isoforms of AIFL exist due to alternative splicing events. The gene encoding AIFL maps to human chromosome 22, which houses over 500 genes and is the second smallest human chromosome.

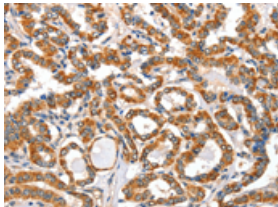
Applications

Immunohistochemistry

Predicted cell location: Cytoplasm

Positive control: Human thyroid cancer

Recommended dilution: 50-200

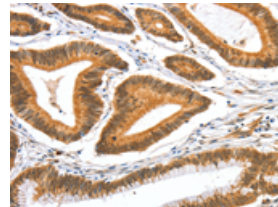


The image on the left is immunohistochemistry of paraffin-embedded Human thyroid cancer tissue using ml221934(AIFM3 Antibody) at dilution 1/40, on the right is treated with fusion protein. (Original magnification: $\times 200$)

Predicted cell location: Cytoplasm

Positive control: Human colon cancer

Recommended dilution: 50-200



The image on the left is immunohistochemistry of paraffin-embedded Human colon cancer tissue using ml221934(AIFM3 Antibody) at dilution 1/40, on the right is treated with fusion protein. (Original magnification: $\times 200$)

Western blotting

Predicted band size: 67 kDa

Positive control: Mouse thymus tissue

Recommended dilution: 200-1000

Gel: 10%SDS-PAGE

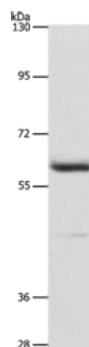
Lysate: 40 μ g

Lane: Mouse thymus tissue

Primary antibody: ml221934(AIFM3 Antibody) at dilution 1/240

Secondary antibody: Goat anti rabbit IgG at 1/8000 dilution

Exposure time: 5 seconds



ELISA

Recommended dilution: 1000-5000

联系电话: 4008-898-798, 021-61725725

联系QQ: 2881505695, 2881505696

邮箱: mlbio_cn@yeah.net

网址: www.mlbio.cn