

Anti-AMY2A antibody

Cat. No.	ml221941
Package	25 µl/100 µl/200 µl
Storage	-20°C, pH7.4 PBS, 0.05% NaN ₃ , 40% Glycerol

Product overview

Description	Anti-AMY2A rabbit polyclonal antibody
Applications	ELISA, WB, IHC
Immunogen	Fusion protein of human AMY2A
Reactivity	Human, Mouse
Content	0.7 mg/ml
Host species	Rabbit
Ig class	Immunogen-specific rabbit IgG
Purification	Antigen affinity purification

Target information

Symbol	AMY2A
Full name	amylase, alpha 2A (pancreatic)

Synonyms PA; AMY2; AMY2B

Swissprot P04746

Target Background

Amylases are secreted proteins that hydrolyze 1,4- α -glucoside bonds in oligosaccharides and polysaccharides, and thus catalyze the first step in digestion of dietary starch and glycogen. The human genome has a cluster of several amylase genes that are expressed at high levels in either salivary gland or pancreas. This gene encodes an amylase isoenzyme produced by the pancreas.

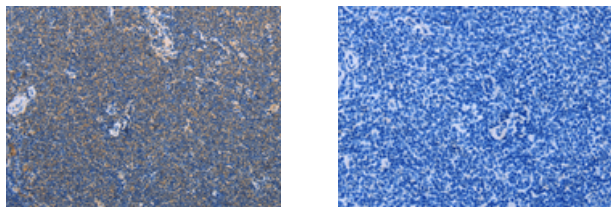
Applications

Immunohistochemistry

Predicted cell location: Cytoplasm

Positive control: Human Lymphoma

Recommended dilution: 50-200



The image on the left is immunohistochemistry of paraffin-embedded Human Lymphoma tissue using ml221941 (AMY2A Antibody) at dilution 1/60, on the right is treated with fusion protein. (Original magnification: $\times 200$)

Western blotting

Predicted band size: 58 kDa

Positive control: Mouse pancreas tissue

Recommended dilution: 1000-5000

Gel: 15%SDS-PAGE

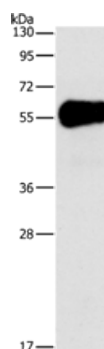
Lysate: 40 μ g

Lane: Mouse pancreas tissue

Primary antibody: ml221941 (AMY2A Antibody) at dilution 1/1550

Secondary antibody: Goat anti rabbit IgG at 1/8000 dilution

Exposure time: 1 second



ELISA

Recommended dilution: 2000-10000

联系电话: 4008-898-798, 021-61725725

联系QQ: 2881505695, 2881505696

邮箱: mlbio_cn@yeah.net

网址: www.mlbio.cn