

Anti-ALG6 antibody

Cat. No.	ml261261
Package	25 µl/100 µl/200 µl
Storage	-20°C, pH7.4 PBS, 0.05% NaN ₃ , 40% Glycerol

Product overview

Description	Anti-ALG6 rabbit polyclonal antibody
Applications	ELISA, WB
Immunogen	Synthetic peptide of human ALG6
Reactivity	Human, Mouse, Rat
Content	0.3 mg/ml
Host species	Rabbit
Ig class	Immunogen-specific rabbit IgG
Purification	Antigen affinity purification

Target information

Symbol	ALG6
Full name	ALG6, alpha-1,3-glucosyltransferase
Synonyms	CDG1C
Swissprot	Q9Y672

Target Background

This gene encodes a member of the ALG6/ALG8 glucosyltransferase family. The encoded protein catalyzes the addition of the first glucose residue to the growing lipid-linked oligosaccharide precursor of N-linked glycosylation. Mutations in this gene are associated with congenital disorders of glycosylation type Ic.

订购热线: 4008-898-798

Applications

Western blotting

Predicted band size: 58 kDa

Positive control: Human lymphoma tissue

Recommended dilution: 200-1000

Gel: 10%SDS-PAGE

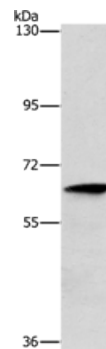
Lysate: 40 µg

Lane: Human lymphoma tissue

Primary antibody: ml261261(ALG6 Antibody) at dilution 1/350

Secondary antibody: Goat anti rabbit IgG at 1/8000 dilution

Exposure time: 30 seconds



ELISA

Recommended dilution: 1000-2000

联系电话: 4008-898-798, 021-61725725

联系QQ: 2881505695, 2881505696

邮箱: mlbio_cn@yeah.net

网址: www.mlbio.cn