

Anti-SAMD3 antibody

Cat. No.	ml223091
Package	25 µl/100 µl/200 µl
Storage	-20°C, pH7.4 PBS, 0.05% NaN ₃ , 40% Glycerol

Product overview

Description	Anti-SAMD3 rabbit polyclonal antibody
Applications	ELISA, WB, IHC
Immunogen	Fusion protein of human SAMD3
Reactivity	Human
Content	0.3 mg/ml
Host species	Rabbit
Ig class	Immunogen-specific rabbit IgG
Purification	Antigen affinity purification

Target information

Symbol	SAMD3
Full name	sterile alpha motif domain containing 3

Synonyms

Swissprot Q8N6K7

Target Background

The sterile alpha motif (SAM) domain is a 70 residue structure found in a large number of proteins involved in diverse processes present throughout the eukaryotes. The SAM domain is known to bind RNA and is arranged in a small five-helix bundle with two large interfaces. There are three isoforms of SAMD3 produced by alternative splicing. The isoform 1 has been chosen as the canonical sequence. All positional information in this entry refers to it. The sequence of isoform 2 differs from the canonical sequence as follows: 219-221: FLW → AGV; 222-520: Missing. And the sequence of isoform 3 differs from the canonical sequence as follows: 1-1: M → MRSSKLQSPSPSQEKQGVYLQETAM.

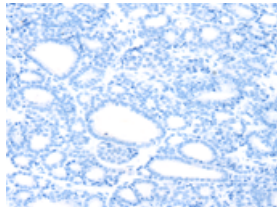
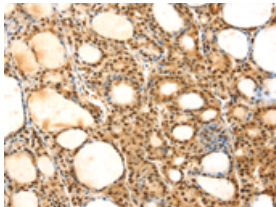
Applications

Immunohistochemistry

Predicted cell location: Cytoplasm and Nucleus

Positive control: Human thyroid cancer

Recommended dilution: 25-100

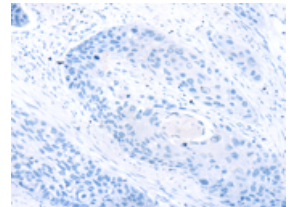
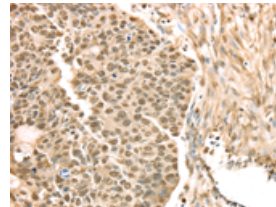


The image on the left is immunohistochemistry of paraffin-embedded Human thyroid cancer tissue using ml223091(SAMD3 Antibody) at dilution 1/25, on the right is treated with fusion protein. (Original magnification: ×200)

Predicted cell location: Cytoplasm and Nucleus

Positive control: Human esophagus cancer

Recommended dilution: 25-100



The image on the left is immunohistochemistry of paraffin-embedded Human esophagus cancer tissue using ml223091(SAMD3 Antibody) at dilution 1/25, on the right is treated with fusion protein. (Original magnification: ×200)

Western blotting

Predicted band size: 61 kDa

Positive control: Human placenta and stomach cancer tissue

Recommended dilution: 500-2000

Gel: 8%SDS-PAGE

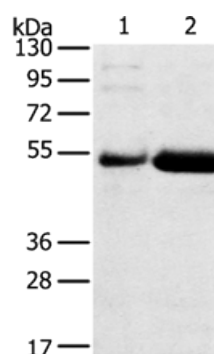
Lysate: 40 µg

Lane 1-2: Human placenta tissue, Human stomach cancer tissue

Primary antibody: ml223091(SAMD3 Antibody) at dilution 1/400

Secondary antibody: Goat anti rabbit IgG at 1/8000 dilution

Exposure time: 4 minutes



ELISA

Recommended dilution: 2000-5000

联系电话: 4008-898-798, 021-61725725

联系QQ: 2881505695, 2881505696

邮箱: mlbio_cn@yeah.net

网址: www.mlbio.cn