

Anti-CABLES1 antibody

Cat. No.	ml222009
Package	25 µl/100 µl/200 µl
Storage	-20°C, pH7.4 PBS, 0.05% NaN ₃ , 40% Glycerol

Product overview

Description	Anti-CABLES1 rabbit polyclonal antibody
Applications	ELISA, WB, IHC
Immunogen	Fusion protein of human CABLES1
Reactivity	Human, Mouse
Content	0.4 mg/ml
Host species	Rabbit
Ig class	Immunogen-specific rabbit IgG
Purification	Antigen affinity purification

Target information

Symbol	CABLES1
Full name	Cdk5 and Abl enzyme substrate 1

Synonyms CABL1; IK3-1; CABLES; HsT2563

Swissprot Q8TDN4

Target Background

This gene encodes a protein involved in regulation of the cell cycle through interactions with several cyclin-dependent kinases. One study (PMID: 16177568) reported aberrant splicing of transcripts from this gene which results in removal of the cyclin binding domain only in human cancer cells, and reduction in gene expression was shown in colorectal cancers (PMID: 17982127). Multiple transcript variants encoding different isoforms have been found for this gene.

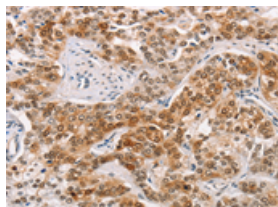
Applications

Immunohistochemistry

Predicted cell location: Nucleus and Cytoplasm

Positive control: Human prostate cancer

Recommended dilution: 25-100

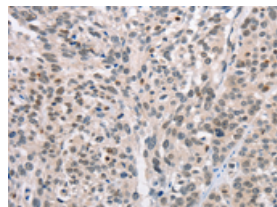


The image on the left is immunohistochemistry of paraffin-embedded Human prostate cancer tissue using ml222009(CABLES1 Antibody) at dilution 1/15, on the right is treated with fusion protein. (Original magnification: $\times 200$)

Predicted cell location: Nucleus and Cytoplasm

Positive control: Human esophagus cancer

Recommended dilution: 25-100



The image on the left is immunohistochemistry of paraffin-embedded Human esophagus cancer tissue using ml222009(CABLES1 Antibody) at dilution 1/15, on the right is treated with fusion protein. (Original magnification: $\times 200$)

Western blotting

Predicted band size: 68 kDa

Positive control: Mouse brain and heart tissue, mouse liver tissue

Recommended dilution: 500-2000

Gel: 6%SDS-PAGE

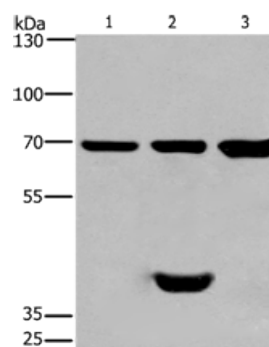
Lysate: 40 μ g

Lane 1-3: Mouse brain tissue, Mouse heart tissue, mouse liver tissue

Primary antibody: ml222009(CABLES1 Antibody) at dilution 1/350

Secondary antibody: Goat anti rabbit IgG at 1/8000 dilution

Exposure time: 1 minute



ELISA

Recommended dilution: 2000-5000

联系电话: 4008-898-798, 021-61725725

联系QQ: 2881505695, 2881505696

邮箱: mlbio_cn@yeah.net

网址: www.mlbio.cn