

Anti-CALU antibody

Cat. No.	ml222019
Package	25 µl/100 µl/200 µl
Storage	-20°C, pH7.4 PBS, 0.05% NaN ₃ , 40% Glycerol

Product overview

Description	Anti-CALU rabbit polyclonal antibody
Applications	ELISA, WB, IHC
Immunogen	Fusion protein of human CALU
Reactivity	Human, Mouse, Rat
Content	0.4 mg/ml
Host species	Rabbit
Ig class	Immunogen-specific rabbit IgG
Purification	Antigen affinity purification

Target information

Symbol	CALU
Full name	calumenin

Synonyms

Swissprot O43852

Target Background

The product of this gene is a calcium-binding protein localized in the endoplasmic reticulum (ER) and it is involved in such ER functions as protein folding and sorting. This protein belongs to a family of multiple EF-hand proteins (CERC) that include reticulocalbin, ERC-55, and Cab45 and the product of this gene. Alternatively spliced transcript variants encoding different isoforms have been identified

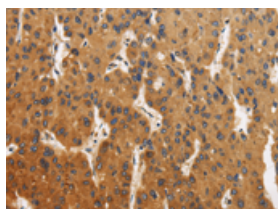
Applications

Immunohistochemistry

Predicted cell location: Cytoplasm

Positive control: Human liver cancer

Recommended dilution: 100-300

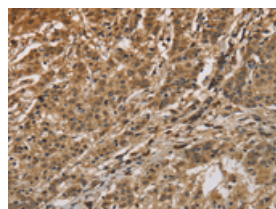


The image is immunohistochemistry of paraffin-embedded Human liver cancer tissue using ml222019(CALU Antibody) at dilution 1/40. (Original magnification: $\times 200$)

Predicted cell location: Cytoplasm

Positive control: Human gastric cancer

Recommended dilution: 100-300



The image is immunohistochemistry of paraffin-embedded Human gastric cancer tissue using ml222019(CALU Antibody) at dilution 1/40. (Original magnification: $\times 200$)

Western blotting

Predicted band size: 37 kDa

Positive control: Human placenta tissue

Recommended dilution: 500-2000

Gel: 8% SDS-PAGE

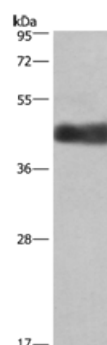
Lysate: 40 μ g

Lane: Human placenta tissue

Primary antibody: ml222019(CALU Antibody) at dilution 1/400

Secondary antibody: Goat anti rabbit IgG at 1/8000 dilution

Exposure time: 1 minute



mlbio 酶联生物
Good elisakit producers
订购热线: 4008-898-798

ELISA

Recommended dilution: 2000-5000

联系电话: 4008-898-798, 021-61725725

联系QQ: 2881505695, 2881505696

邮箱: mlbio_cn@yeah.net

网址: www.mlbio.cn