

## Anti-SNAP23 antibody

<b>Cat. No.</b>	ml223191
<b>Package</b>	25 µl/100 µl/200 µl
<b>Storage</b>	-20°C, pH7.4 PBS, 0.05% NaN <sub>3</sub> , 40% Glycerol

### Product overview

<b>Description</b>	Anti-SNAP23 rabbit polyclonal antibody
<b>Applications</b>	ELISA, WB
<b>Immunogen</b>	Fusion protein of human SNAP23
<b>Reactivity</b>	Human, Mouse, Rat
<b>Content</b>	0.2 mg/ml
<b>Host species</b>	Rabbit
<b>Ig class</b>	Immunogen-specific rabbit IgG
<b>Purification</b>	Antigen affinity purification

### Target information

<b>Symbol</b>	SNAP23
<b>Full name</b>	synaptosomal-associated protein, 23kDa
<b>Synonyms</b>	SNAP-23; SNAP23A; SNAP23B; HsT17016
<b>Swissprot</b>	O00161

### Target Background

Specificity of vesicular transport is regulated, in part, by the interaction of a vesicle-associated membrane protein termed synaptobrevin/VAMP with a target compartment membrane protein termed syntaxin. These proteins, together with SNAP25 (synaptosome-associated protein of 25 kDa), form a complex which serves as a binding site for the general membrane fusion machinery.

订购热线: 4008-898-798

#### Applications

##### Western blotting

Predicted band size: 23 kDa

Positive control: Human normal liver tissue and A549 cells, human fetal liver tissue and hepg2 cells, hela cells and human placenta tissue

Recommended dilution: 500-2000

Gel: 12%SDS-PAGE

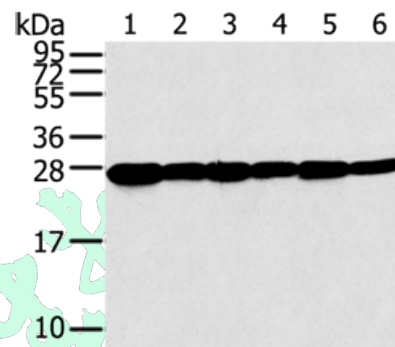
Lysate: 40 µg

Lane 1-6: Human normal liver tissue, A549 cells, human fetal liver tissue, hepg2 cells, hela cells, human placenta tissue

Primary antibody: ml223191(SNAP23 Antibody) at dilution 1/200

Secondary antibody: Goat anti rabbit IgG at 1/8000 dilution

Exposure time: 5 seconds



##### ELISA

Recommended dilution: 2000-5000

联系电话: 4008-898-798, 021-61725725

联系QQ: 2881505695, 2881505696

邮箱: [mlbio\\_cn@yeah.net](mailto:mlbio_cn@yeah.net)

网址: [www.mlbio.cn](http://www.mlbio.cn)

**mlbio** 酶联生物  
Good elisakit producers  
订购热线: 4008-898-798