

## Anti-SMARCA5 antibody

<b>Cat. No.</b>	ml223194
<b>Package</b>	25 µl/100 µl/200 µl
<b>Storage</b>	-20°C, pH7.4 PBS, 0.05% NaN <sub>3</sub> , 40% Glycerol

### Product overview

<b>Description</b>	Anti-SMARCA5 rabbit polyclonal antibody
<b>Applications</b>	ELISA, WB
<b>Immunogen</b>	Fusion protein of human SMARCA5
<b>Reactivity</b>	Human, Mouse
<b>Content</b>	0.4 mg/ml
<b>Host species</b>	Rabbit
<b>Ig class</b>	Immunogen-specific rabbit IgG
<b>Purification</b>	Antigen affinity purification

### Target information

<b>Symbol</b>	SMARCA5
<b>Full name</b>	SWI/SNF related, matrix associated, actin dependent regulator of chromatin, subfamily a, member 5
<b>Synonyms</b>	ISWI; SNF2H; hISWI; hSNF2H; WCRF135
<b>Swissprot</b>	O60264

### Target Background

The protein encoded by this gene is a member of the SWI/SNF family of proteins. Members of this family have helicase and ATPase activities and are thought to regulate transcription of certain genes by altering the chromatin structure around those genes. The protein encoded by this gene is a component of the chromatin remodeling and spacing factor RSF, a facilitator of the transcription of class II genes by RNA polymerase II.

订购热线: 4008-898-798

#### Applications

##### Western blotting

Predicted band size: 122 kDa

Positive control: Hepg2, MCF7, Jurkat, hela, A431, K562 and Incap cells

Recommended dilution: 500-2000

Gel: 6%SDS-PAGE

Lysate: 40 µg

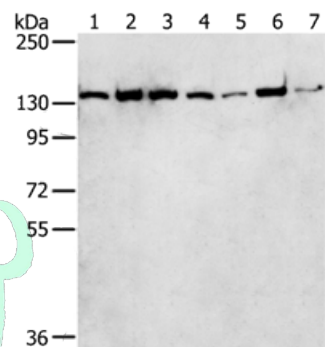
Lane 1-7: Hepg2 cells, MCF7 cells, Jurkat cells, hela cells,

A431 cells, K562 cells, Incap cells

Primary antibody: ml223194(SMARCA5 Antibody) at dilution 1/250

Secondary antibody: Goat anti rabbit IgG at 1/8000 dilution

Exposure time: 20 seconds



##### ELISA

Recommended dilution: 2000-5000

联系电话: 4008-898-798, 021-61725725

联系QQ: 2881505695, 2881505696

邮箱: [mlbio\\_cn@yeah.net](mailto:mlbio_cn@yeah.net)

网址: [www.mlbio.cn](http://www.mlbio.cn)