

Anti-CAPZA2 antibody

Cat. No.	ml222025
Package	25 µl/100 µl/200 µl
Storage	-20°C, pH7.4 PBS, 0.05% NaN ₃ , 40% Glycerol

Product overview

Description	Anti-CAPZA2 rabbit polyclonal antibody
Applications	ELISA, WB, IHC
Immunogen	Fusion protein of human CAPZA2
Reactivity	Human, Mouse, Rat
Content	0.4 mg/ml
Host species	Rabbit
Ig class	Immunogen-specific rabbit IgG
Purification	Antigen affinity purification

Target information

Symbol	CAPZA2
Full name	capping protein (actin filament) muscle Z-line, alpha 2

Synonyms CAPZ; CAPPA2

Swissprot P47755

Target Background

The protein encoded by this gene is a member of the F-actin capping protein alpha subunit family. It is the alpha subunit of the barbed-end actin binding protein Cap Z. By capping the barbed end of actin filaments, Cap Z regulates the growth of the actin filaments at the barbed end.

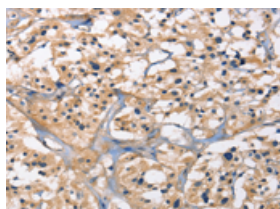
Applications

Immunohistochemistry

Predicted cell location: Cytoplasm

Positive control: Human thyroid cancer

Recommended dilution: 25-100

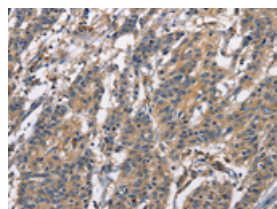


The image on the left is immunohistochemistry of paraffin-embedded Human thyroid cancer tissue using ml222025(CAPZA2 Antibody) at dilution 1/15, on the right is treated with fusion protein. (Original magnification: $\times 200$)

Predicted cell location: Cytoplasm

Positive control: Human gastric cancer

Recommended dilution: 25-100



The image on the left is immunohistochemistry of paraffin-embedded Human gastric cancer tissue using ml222025(CAPZA2 Antibody) at dilution 1/15, on the right is treated with fusion protein. (Original magnification: $\times 200$)

Western blotting

Predicted band size: 33 kDa

Positive control: Lovo, hela and NIH/3T3 cells, mouse liver and muscle tissue

Recommended dilution: 500-2000

Gel: 15%SDS-PAGE

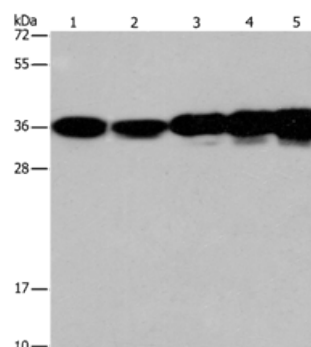
Lysate: 40 µg

Lane 1-5: Lovo cells, hela cells, NIH/3T3 cells, mouse liver tissue, Mouse muscle tissue

Primary antibody: ml222025(CAPZA2 Antibody) at dilution 1/300

Secondary antibody: Goat anti rabbit IgG at 1/8000 dilution

Exposure time: 1 minute



ELISA

Recommended dilution: 2000-5000

联系电话: 4008-898-798, 021-61725725

联系QQ: 2881505695, 2881505696

邮箱: mlbio_cn@yeah.net

网址: www.mlbio.cn