

Anti-BSG antibody

Cat. No.	ml222048
Package	25 µl/100 µl/200 µl
Storage	-20°C, pH7.4 PBS, 0.05% NaN ₃ , 40% Glycerol

Product overview

Description	Anti-BSG rabbit polyclonal antibody
Applications	ELISA, WB, IHC
Immunogen	Fusion protein of human BSG
Reactivity	Human
Content	0.9 mg/ml
Host species	Rabbit
Ig class	Immunogen-specific rabbit IgG
Purification	Antigen affinity purification

Target information

Symbol	BSG
Full name	basigin

Synonyms M6; OK; 5F7; TCSF; CD147; EMMPRIN

Swissprot P35613

Target Background

The protein encoded by this gene is a plasma membrane protein that is important in spermatogenesis, embryo implantation, neural network formation, and tumor progression. The encoded protein is also a member of the immunoglobulin superfamily. Multiple transcript variants encoding different isoforms have been found for this gene.

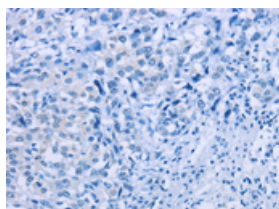
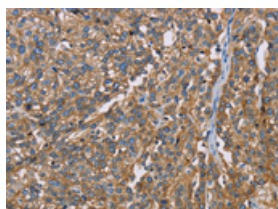
Applications

Immunohistochemistry

Predicted cell location: Cell membrane and Cytoplasm

Positive control: Human esophagus cancer

Recommended dilution: 50-200

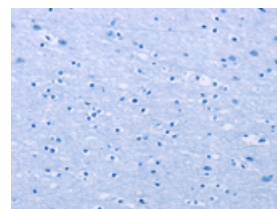
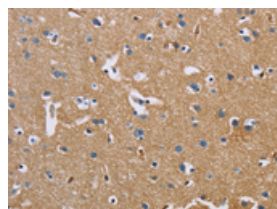


The image on the left is immunohistochemistry of paraffin-embedded Human esophagus cancer tissue using ml222048(BSG Antibody) at dilution 1/60, on the right is treated with fusion protein. (Original magnification: ×200)

Predicted cell location: Cell membrane and Cytoplasm

Positive control: Human brain

Recommended dilution: 50-200



The image on the left is immunohistochemistry of paraffin-embedded Human brain tissue using ml222048(BSG Antibody) at dilution 1/60, on the right is treated with fusion protein. (Original magnification: ×200)

Western blotting

Predicted band size: 42 kDa

Positive control: A549 and 231 cells

Recommended dilution: 500-2000

Gel: 8%SDS-PAGE

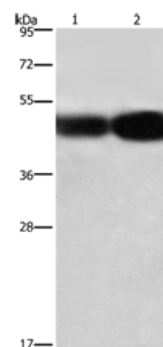
Lysate: 40 µg

Lane 1-2: A549 cells, 231 cells

Primary antibody: ml222048(BSG Antibody) at dilution 1/430

Secondary antibody: Goat anti rabbit IgG at 1/8000 dilution

Exposure time: 12 seconds



ELISA

Recommended dilution: 2000-5000

联系电话: 4008-898-798, 021-61725725

联系QQ: 2881505695, 2881505696

邮箱: mlbio_cn@yeah.net

网址: www.mlbio.cn